

VOR/DME CPN <b>116.05</b> Chan <b>107 (Y)</b>	APP CRS <b>309°</b>	Rwy Idg TDZE Apt Elev <b>N/A</b> <b>N/A</b> <b>5034</b>
---	------------------------	---

**VOR-A**  
BOWMAN FLD (3U3)

DME required.

▼  
▲ NA  
❄ -25°C

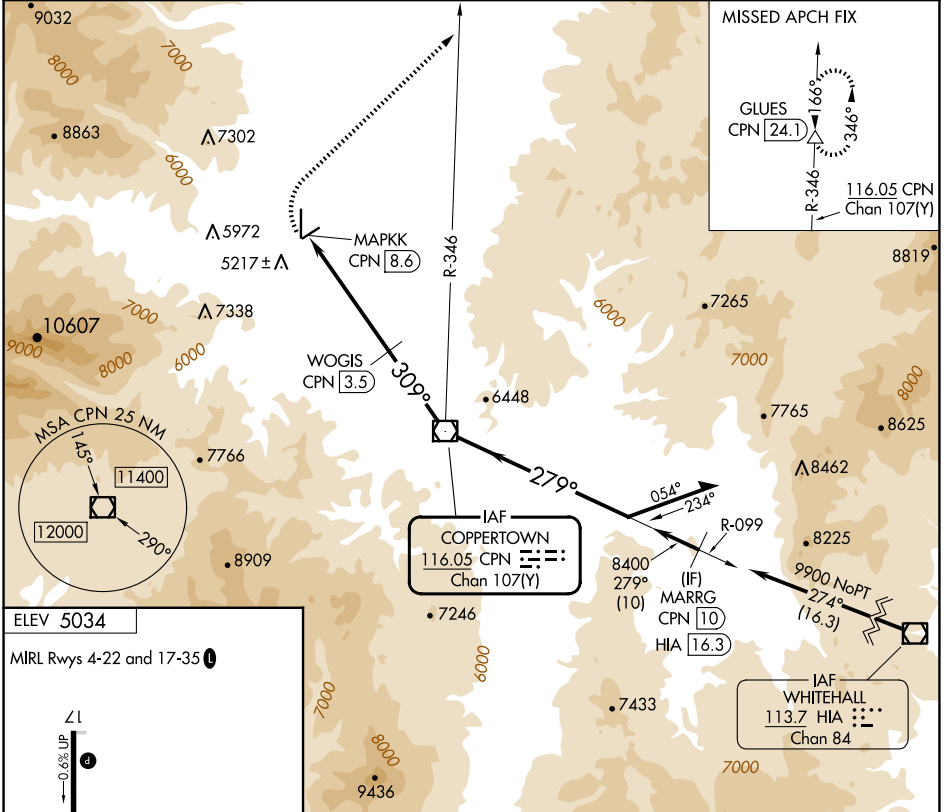
When local altimeter settings not received, use Butte altimeter setting and increase all MDAs 120 feet.  
Circling NA for Cats C and D west of Rwy 17-35.

MISSED APPROACH: Climbing right turn to 9200 on heading 030° and on CPN VOR/DME R-346 to GLUES/CPN 24.1 DME and hold.

AWOS-3PT  
**124.175**

SALT LAKE CENTER  
**132.4 338.3**

UNICOM  
**122.8 (CTAF)**

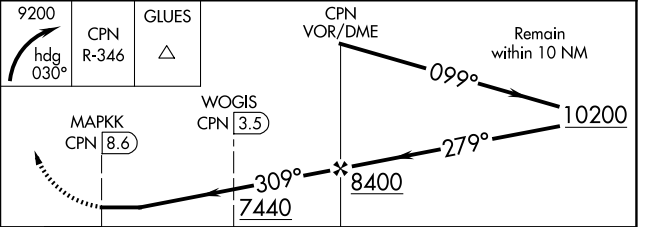
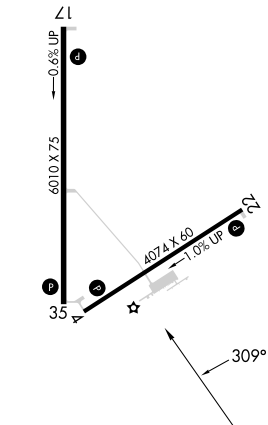


NW-1, 25 DEC 2025 to 22 JAN 2026

NW-1, 25 DEC 2025 to 22 JAN 2026

ELEV 5034

MIRL Rwys 4-22 and 17-35



CATEGORY	A	B	C	D
CIRCLING	6120-1¼ 1086 (1100-1¼)	6240-1½ 1206 (1300-1½)	6240-3	1206 (1300-3)