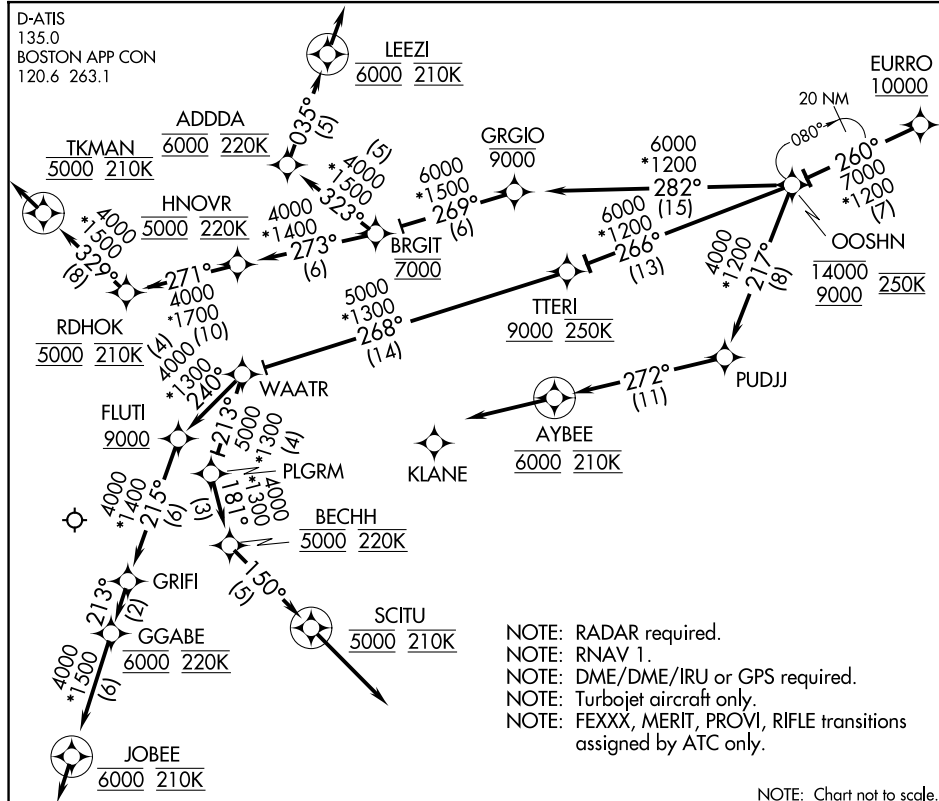


OOSHN FIVE ARRIVAL (RNAV) Arrival Routes

BOSTON, MASSACHUSETTS

D-ATIS
135.0
BOSTON APP CON
120.6 263.1



NOTE: RADAR required.
NOTE: RNAV 1.
NOTE: DME/DME/IRU or GPS required.
NOTE: Turbojet aircraft only.
NOTE: FEXXX, MERIT, PROVI, RIFLE transitions
assigned by ATC only.

NOTE: Chart not to scale.

ARRIVAL ROUTE DESCRIPTION

From EURRO on track 260° to cross OOSHNI between 9000 and 14000 and at 250K.

Landing Rwys 4L/R: From OOSH on track 266° to cross TTER1 at or above 9000 and at 250K, then on track 268° to WAATR, then on track 240° to cross FLUT1 at or above 9000, then on track 215° to GRIF1, then on track 213° to cross GGABE at 6000 and at 220K, then on track 213° to cross JOBEE at 6000 and at 210K, then on track 213°. Expect RADAR vectors to final approach course.

Landing Rwy 15R: From OOSHN on track 282° cross GRGIO at or below 9000, then on track 269° to cross BRGIT at 7000, then on track 273° to cross HNOVR at 5000 and at 220K, then on track 271° to cross RDHOK at 5000 and at 210K, then on track 329° to cross TKMAN at 5000 and at 210K, then on track 329°. Expect RADAR vectors to final approach course.

Landing Rwys 22L/R: From OOSHN on track 282° to cross GRGIO at or below 9000, then on track 269° to cross BRGIT at 7000, then on track 323° to cross ADDDA at 6000 and at 220K, then on track 035° to cross LEEZI at 6000 and at 210K, then on track 035°. Expect RADAR vectors to final approach course.

Landing Rwy 27: From OOSHN on track 217° to PUDJJ, then on track 272° to cross AYBEE at 6000 and at 210K, then on track 272°. Expect RADAR vectors to final approach course.

Landing Rwy's 32, 33L: From OOSH on track 266° to cross TTERI at or above 9000 at 250K, then on track 268° to WAATR, then on track 213° to PLGRM, then on track 181° to cross BECHH at 5000 and at 220K, then on track 150° to cross SCITU at 5000 and at 210K, then on track 150°. Expect RADAR vectors to final approach course.

OOSHN FIVE ARRIVAL (RNAV) Arrival Routes

BOSTON, MASSACHUSETTS