


LOC/DME I-LPI <b>109.1</b> Chan <b>28</b>	APP CRS <b>172°</b>	Rwy Ldg <b>13500</b> TDZE <b>6187</b> Apt Elev <b>6187</b>
---	------------------------	--

# ILS RWY 17L (SA CAT I & II)

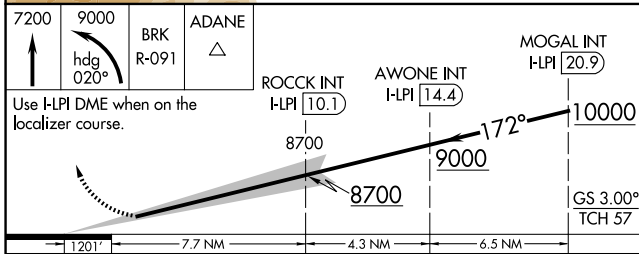
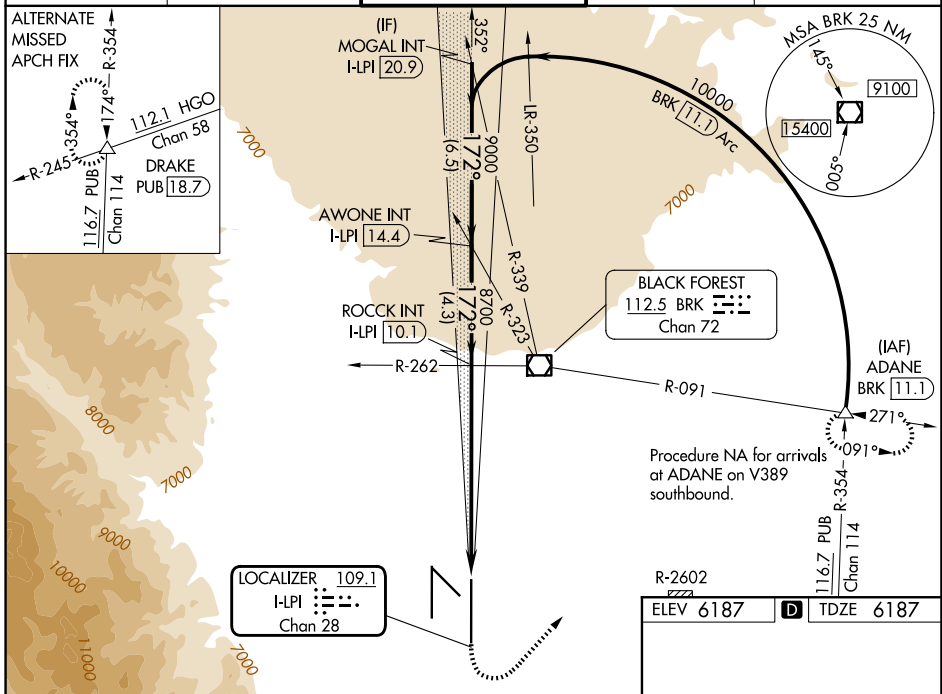
CITY OF COLORADO SPRINGS MUNI (COS)

DME or RADAR required for procedure entry.

⚠ Simultaneous approach authorized with Rwy 17R.  
 SA CAT I: Required specific OPSPEC, MSPEC, or LOA approval and use of HUD to DH. SA CAT II: Reduced Lighting: Requires specific OPSPEC, MSPEC, or LOA approval and use of autoland or HUD to touchdown.

MALS R  
 MISSED APPROACH: Climb to 7200 then climbing left turn to 9000 on heading 020° and on BRK VOR/DME R-091 to ADANE INT/BRK VOR/DME 11.1 DME and hold.

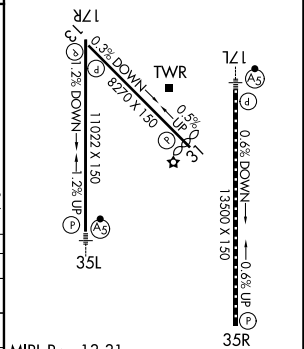
ATIS <b>125.0 254.3</b>	SPRINGS APP CON <b>124.0 257.875</b>	SPRINGS TOWER <b>119.9 360.6</b>	GND CON <b>121.7 348.6</b>	CLNC DEL <b>134.45 363.125</b>
----------------------------	---	-------------------------------------	-------------------------------	-----------------------------------



CATEGORY	A	B	C	D
S-ILS 17L	SA CAT I	RA 169/14	150 DA 6337	
S-ILS 17L	SA CAT II	RA 105/16	100 DA 6287	

## SA CATEGORY I & II ILS SPECIAL AIRCREW & AIRCRAFT CERTIFICATION REQUIRED

R-2602 ELEV <b>6187</b>	<b>D</b> TDZE <b>6187</b>
----------------------------	---------------------------



MIRL Rwy 13-31  
 HIRL Rwsy 17R-35L and 17L-35R  
 REIL Rwsy 13, 17R, 31 and 35R  
 TDZ/CL Rwsy 17L and 35R

SW-1, 22 JAN 2026 to 19 FEB 2026

SW-1, 22 JAN 2026 to 19 FEB 2026