

LOC/DME I-AHI <b>109.1</b> Chan 28	APP CRS <b>352°</b>	Rwy Ldg <b>13500</b> TDZE <b>6118</b> Apt Elev <b>6187</b>
--	------------------------	--

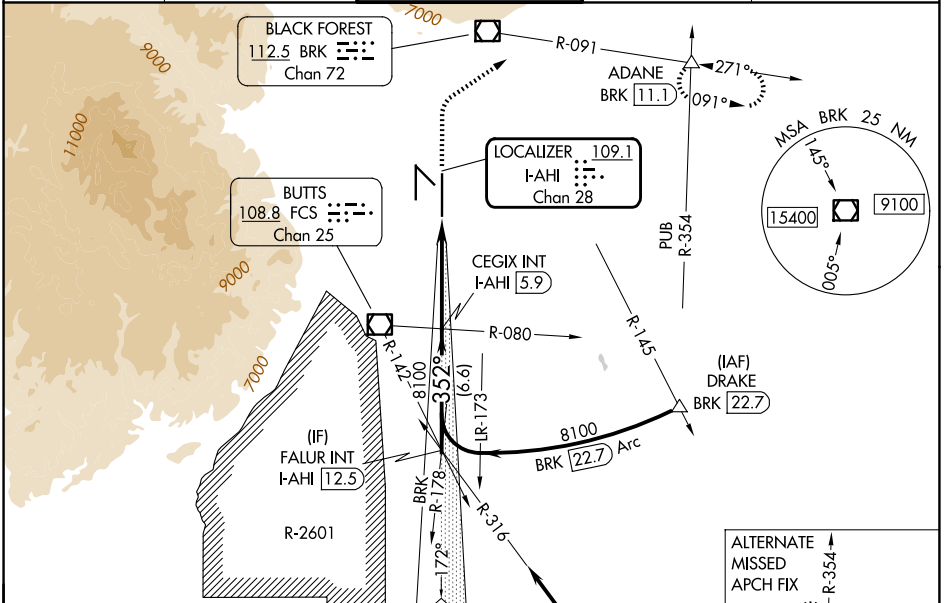
# ILS or LOC RWY 35R

CITY OF COLORADO SPRINGS MUNI (COS)

**⚠** RADAR required when R-2601 in use.

**⚠** MISSED APPROACH: Climb to 6700 then climbing right turn to 9000 on heading 047° and on BRK VOR/DME R-091 to ADANE INT/BRK 11.1 DME and hold.

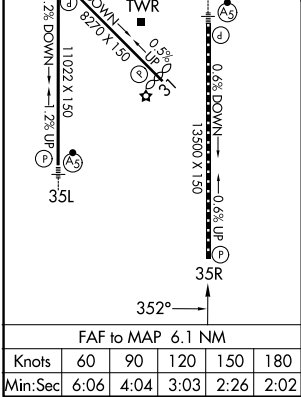
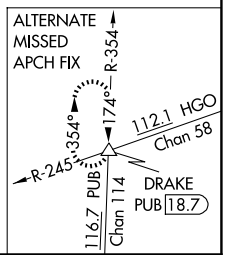
ATIS <b>125.0 254.3</b>	SPRINGS APP CON <b>124.0 257.875</b>	SPRINGS TOWER <b>119.9 360.6</b>	GND CON <b>121.7 348.6</b>	CLNC DEL <b>134.45 363.125</b>
----------------------------	---	-------------------------------------	-------------------------------	-----------------------------------



ELEV 6187	<b>D</b> TDZE 6118
MIRL Rwy 13-31	HIRL Rws 17R-35L and 17L-35R
REIL Rws 13, 17R, 31 and 35R	TDZ/CL Rws 17L and 35R

Procedure NA for arrival on PUB VORTAC airway radials 267 CW 354.

IAF PUEBLO 116.7 PUB Chan 114



VGSI and ILS glidepath not coincident (VGSI Angle 3.00/TCH 71).

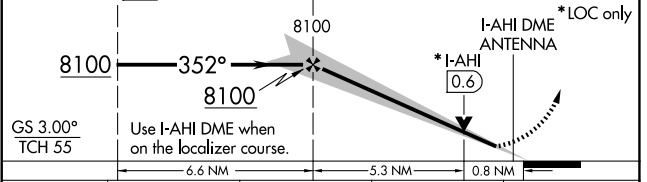
FALUR INT I-AHI 12.5

CEGIX INT I-AHI 5.9

6700 9000

BRK R-091

ADANE



CATEGORY	A	B	C	D
S-ILS 35R	6318/40 200 (200-¾)			
S-LOC 35R	6420/55	302 (300-1)	6420/45	302 (300-¾)
CIRCLING	6740-1 553 (600-1)	6800-1 613 (700-1)	7040-2½ 853 (900-2½)	7260-3 1073 (1100-3)

SW-1, 22 JAN 2026 to 19 FEB 2026

SW-1, 22 JAN 2026 to 19 FEB 2026