

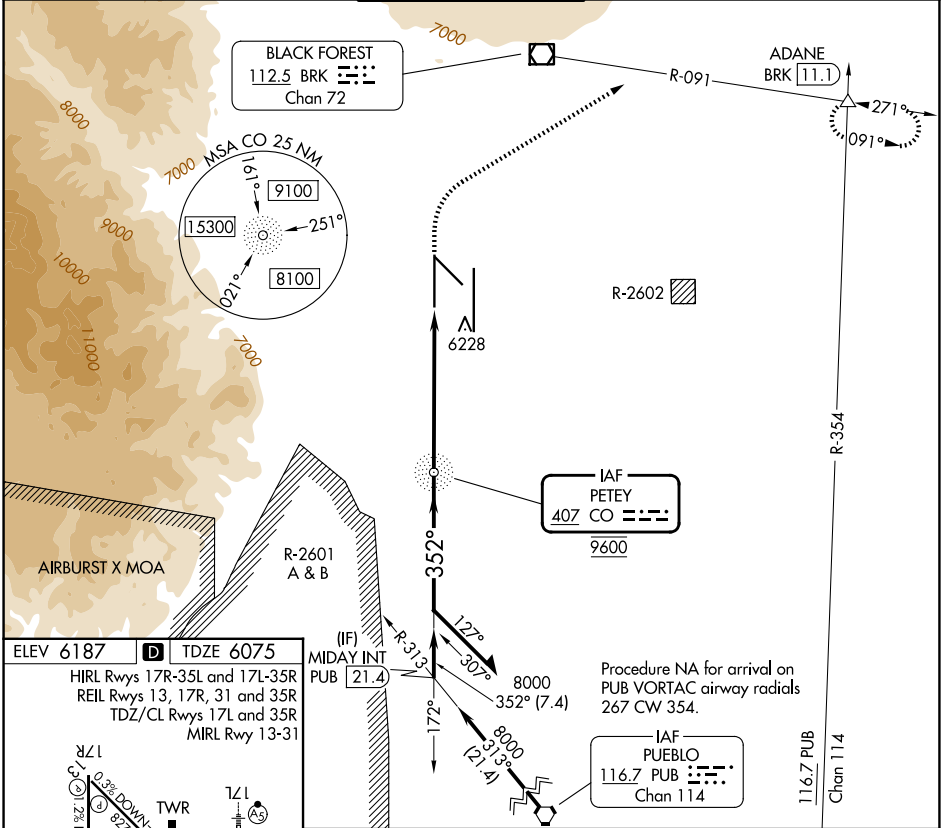
CO NDB 407	APP CRS 352°	Rwy Ldg TDZE 11022 6075	Apt Elev 6187
----------------------	------------------------	---------------------------------------	-------------------------

NDB RWY 35L

CITY OF COLORADO SPRINGS MUNI (COS)

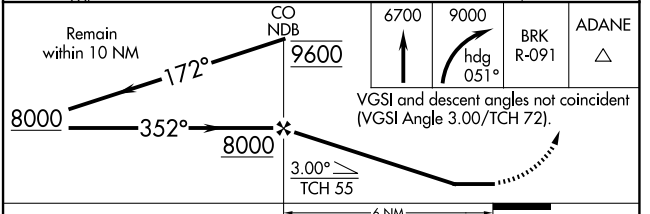
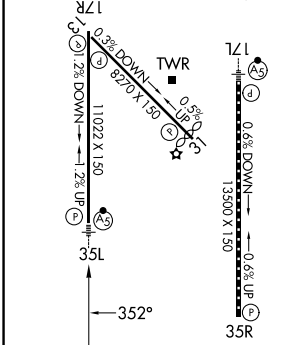
<p>▼ RADAR monitoring required when R-2601 in use. ▲ For inop ALS, increase S-35L Cat A/B visibility RVR 5500, and Cat C/D to 1½ SM.</p>	<p>MALSR </p>	<p>MISSED APPROACH: Climb to 6700 then climbing right turn to 9000 on heading 051° and on BRK VOR/DME R-091 to ADANE INT/BRK 11.1 DME and hold.</p>
--	-------------------	---

ATIS 125.0 254.3	SPRINGS APP CON 124.0 257.875	SPRINGS TOWER 119.9 360.6	GND CON 121.7 348.6	CLNC DEL 134.45 363.125
----------------------------	---	-------------------------------------	-------------------------------	-----------------------------------



ELEV 6187 **D** TDZE 6075

HIRL Rwy 17R-35L and 17L-35R
REIL Rwy 13, 17R, 31 and 35R
TDZ/CL Rwy 17L and 35R
MIRL Rwy 13-31



FAF to MAP 6 NM					
Knots	60	90	120	150	180
Min:Sec	6:00	4:00	3:00	2:24	2:00
CATEGORY	A	B	C	D	
S-35L	6540/40	465 (400-¾)	6540/50	465 (400-1)	
CIRCLING	6740-1 553 (600-1)	6760-1 573 (600-1)	6980-2¼ 793 (800-2¼)	7240-3 1053 (1100-3)	

SW-1, 22 JAN 2026 to 19 FEB 2026

SW-1, 22 JAN 2026 to 19 FEB 2026