

# RNAV (RNP) Z RWY 35L

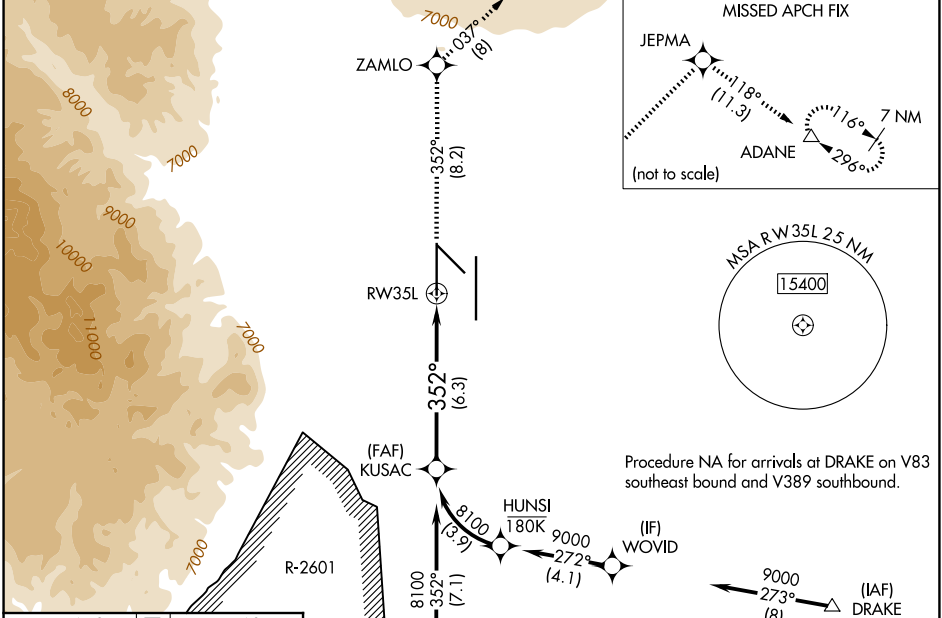
CITY OF COLORADO SPRINGS MUNI (COS)

APP CRS	Rwy Ldg	<b>11022</b>
<b>352°</b>	TDZE	<b>6075</b>
	Apt Elev	<b>6187</b>

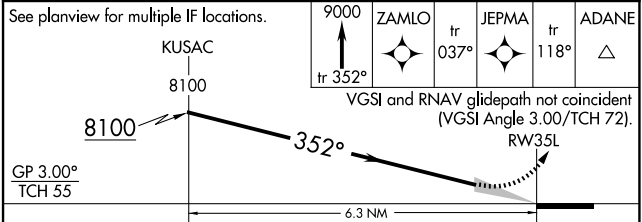
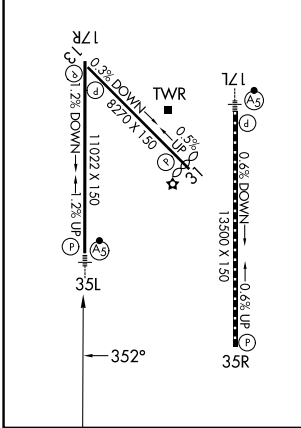
▼ For uncompensated Baro-VNAV systems, procedure NA below -21°C (-5°F) or above 45°C (113°F). GPS required. For inop MALSRS increase RNP 0.15 visibility all Cats to RVR 5000. RADAR monitoring required when R-2601 in use.

MALSRS MISSED APPROACH: Climb to 9000 on track 352° to ZAMLO and on track 037° to JEPMA and on track 118° to ADANE and hold.

ATIS <b>125.0 254.3</b>	SPRINGS APP CON <b>124.0 257.875</b>	SPRINGS TOWER <b>119.9 360.6</b>	GND CON <b>121.7 348.6</b>	CLNC DEL <b>134.45 363.125</b>
----------------------------	---	-------------------------------------	-------------------------------	-----------------------------------



ELEV 6187	<b>D</b>	TDZE 6075
MIRL Rwy 13-31		
HIRL Rwy 17R-35L and 17L-35R		
REIL Rwy 13, 17R, 31, and 35R		
TDZ/CL Rwy 17L and 35R		



CATEGORY	A	B	C	D
RNP 0.15 DA		6372/30	297 (200- <sup>2</sup> / <sub>3</sub> )	
RNP 0.30 DA		6427/40	352 (300- <sup>2</sup> / <sub>3</sub> )	

**AUTHORIZATION REQUIRED**

SW-1, 22 JAN 2026 to 19 FEB 2026

SW-1, 22 JAN 2026 to 19 FEB 2026