

KINGDOM FIVE DEPARTURE

(CONTINUED ON FOLLOWING PAGE)

SC-2, 22 JAN 2026 to 19 FEB 2026

RADAR and DME required.

**TOP ALTITUDE:
ASSIGNED BY ATC**

LONE STAR DEP CON
125.8 257.95
A1IS *

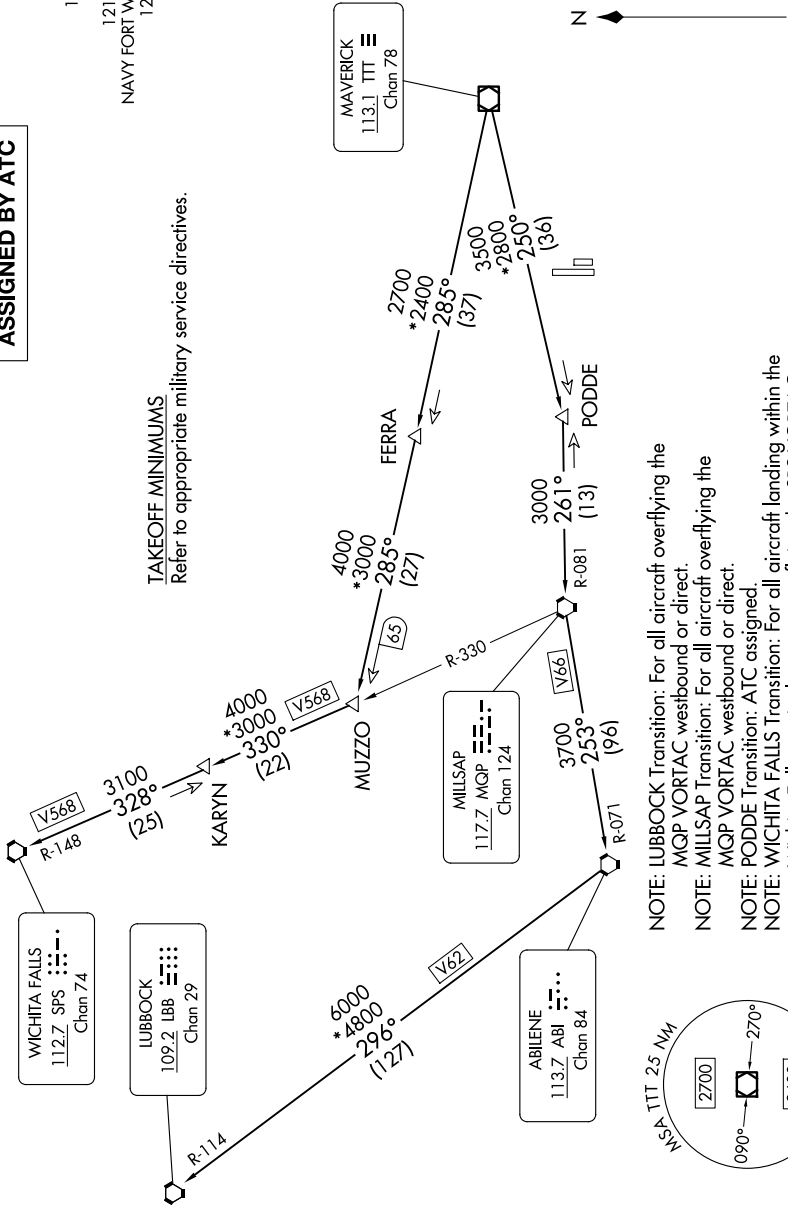
351.675
CINC DEL

126.4 254.325
GND CON

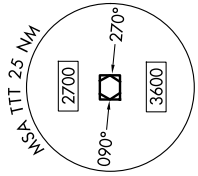
121.675 279.575
120.95 269.325

NAVY FORT WORTH TOWER *

TAKEOFF MINIMUMS
Refer to appropriate military service directives.



- NOTE: LUBBOCK Transition: For all aircraft overlying the MQP VORTAC westbound or direct.
- NOTE: MILLSAP Transition: For all aircraft overlying the MQP VORTAC westbound or direct.
- NOTE: PODDE Transition: ATC assigned.
- NOTE: WICHITA FALLS Transition: For all aircraft landing within the Wichita Falls terminal area or overlying the SPS VORTAC.
- NOTE: For all aircraft requesting 17000 and below.



NOTE: Chart not to scale.

KINGDOM FIVE DEPARTURE

SC-2, 22 JAN 2026 to 19 FEB 2026