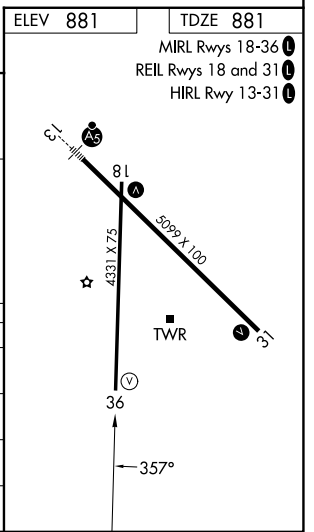
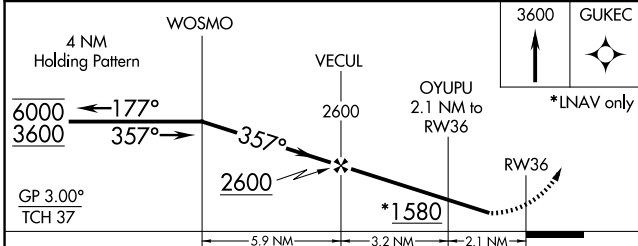
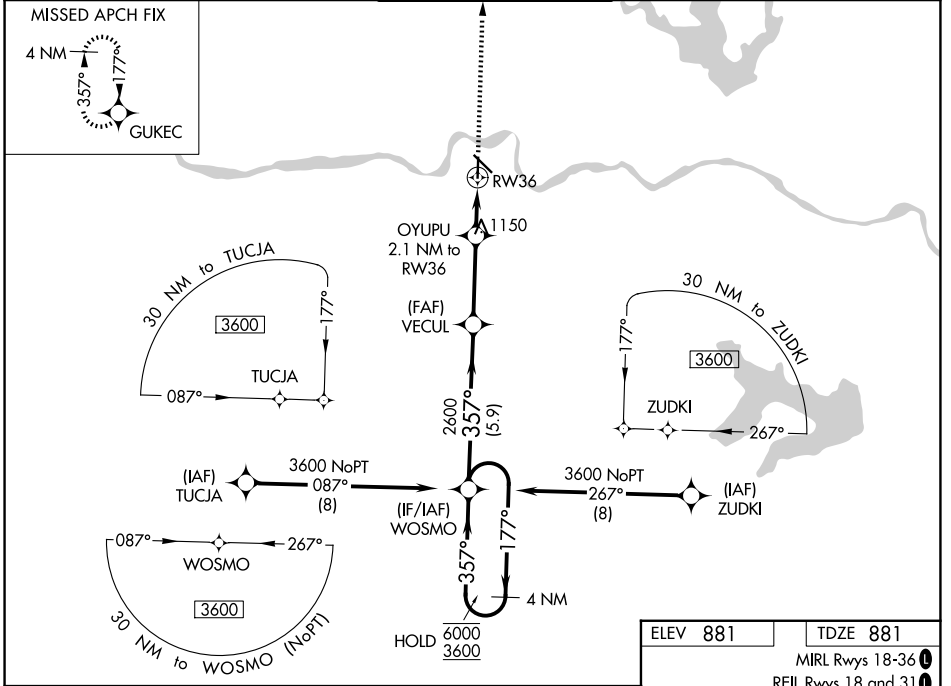


WAAS CH <b>99634</b> <b>W36A</b>	APP CRS <b>357°</b>	Rwy Ldg <b>4331</b> TDZE <b>881</b> Apt Elev <b>881</b>
----------------------------------------	------------------------	---------------------------------------------------------------

# RNAV (GPS) RWY 36

PHILIP BILLARD MUNI (TOP)

RNP APCH.		TOPEKA TOWER ★ <b>118.7 0</b> (CTAF) <b>257.8</b>		GND CON <b>121.9</b>	UNICOM <b>122.95</b>
▼ Rwy 36 helicopter visibility reduction below ¾ SM NA. For uncompensated Baro-VNAV systems, LNAV/VNAV NA below -19°C or above 54°C.		MISSED APPROACH: Climb to 3600 direct GUKEC and hold.			
ASOS <b>121.275</b>	KANSAS CITY CENTER <b>123.8 343.7</b>				



CATEGORY	A	B	C	D
LPV DA	1254-1¼	373 (400-1¼)		NA
LNAV/VNAV DA	1394-1¾	513 (600-1¾)		NA
LNAV MDA	1460-1	579 (600-1)	1460-1½ 579 (600-1½)	NA
CIRCLING	1460-1	579 (600-1)	1600-2 719 (800-2)	NA

NC-2, 22 JAN 2026 to 19 FEB 2026

NC-2, 22 JAN 2026 to 19 FEB 2026