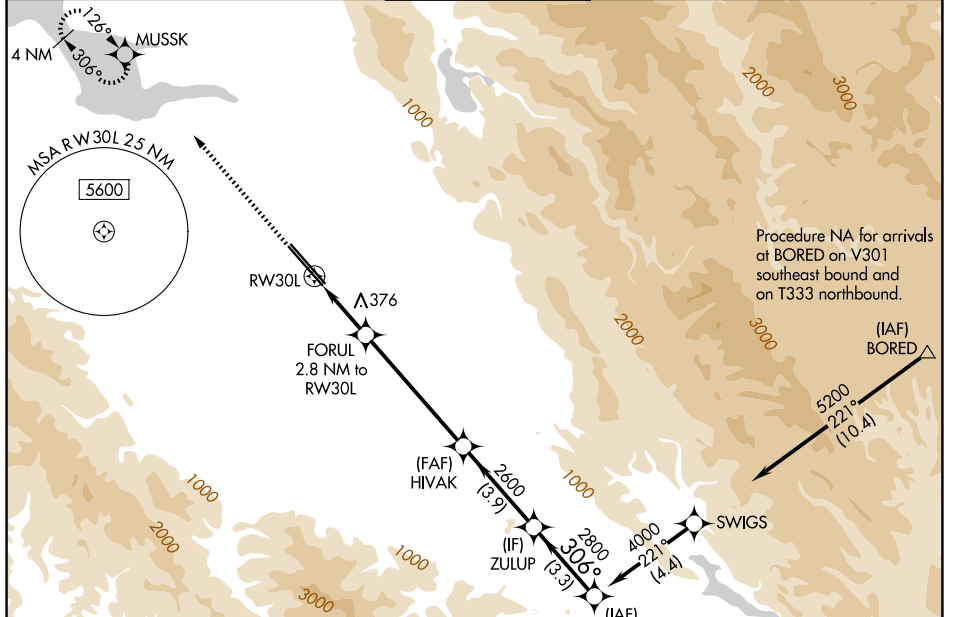


WAAS CH <b>97306</b> <b>W30A</b>	APP CRS <b>306°</b>	Rwy Ldg 30L <b>7614</b> 30R <b>7597</b>
		TDZE <b>57</b> <b>55</b>
		Apt Elev <b>62</b> <b>62</b>

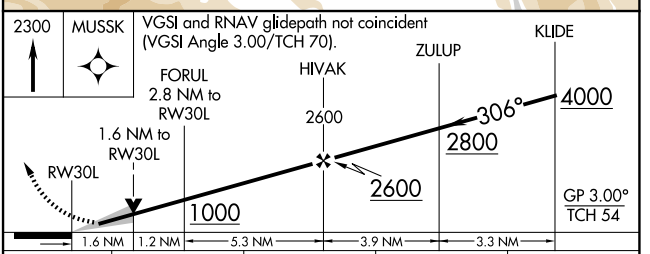
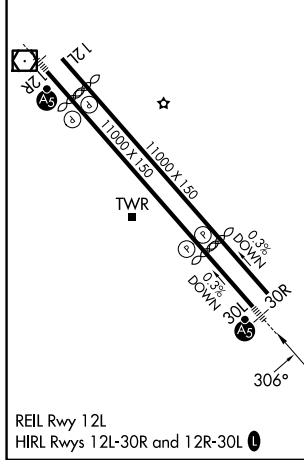
# RNAV (GPS) Y RWY 30L

NORMAN Y MINETA SAN JOSE INTL (SJC)

RNP APCH-GPS.		MALSR Rwy 30L 		MISSED APPROACH: Climb to 2300 direct MUSSK and hold.	
▼ For uncompensated Baro-VNAV systems, LNAV/VNAV NA below 1°C or above 54°C. For inop ALS, increase LNAV/VNAV all Cats visibility to 1½ SM. * RVR 1800 authorized with use of FD or AP or HUD to DA.					
D-ATIS <b>126.95</b>	NORCAL APP CON <b>120.1 290.25</b>	SAN JOSE TOWER * <b>124.0 (CTAF) 257.6</b>		GND CON <b>121.7</b>	UNICOM <b>122.95</b>



ELEV 62	<b>D</b>	TDZE 30L 57
		TDZE 30R 55



CATEGORY	A	B	C	D
LPV DA*		257/24	200 (200-½)	
LNAV/VNAV DA		540/50	483 (500-1)	
LNAV MDA	640/24	583 (600-½)	640-1¼	583 (600-1¼)
SIDESTEP 30R	640-1 585 (600-1)			