

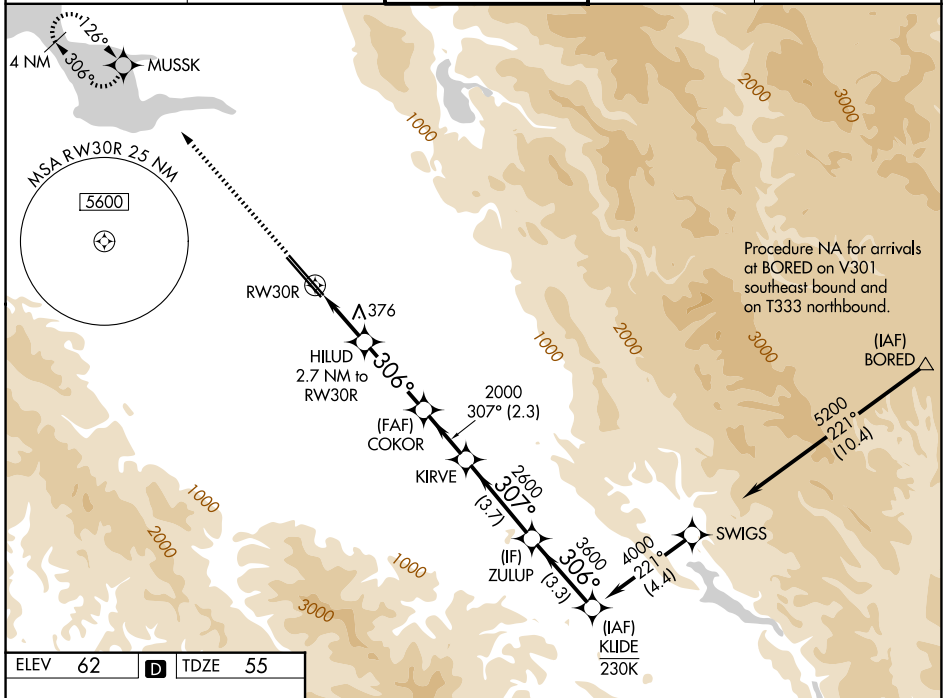
WAAS CH <b>72901</b> <b>W30B</b>	APP CRS <b>306°</b>	Rwy Ldg <b>7597</b> TDZE <b>55</b> Apt Elev <b>62</b>
--	------------------------	---

# RNAV (GPS) Y RWY 30R

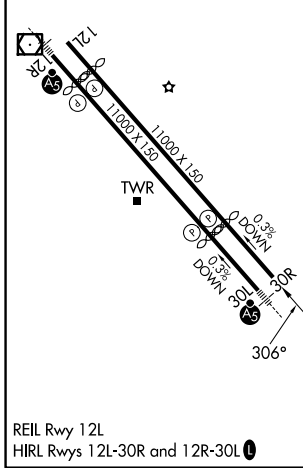
NORMAN Y MINETA SAN JOSE INTL (SJC)

RNP APCH-GPS. ▼ For uncompensated Baro-VNAV systems, LNAV/VNAV NA below -1°C or above 54°C.	MISSED APPROACH: Climb to 2300 direct MUSK and hold.
--	--

D-ATIS <b>126.95</b>	NORCAL APP CON <b>120.1 290.25</b>	SAN JOSE TOWER * <b>124.0 (CTAF) 0 257.6</b>	GND CON <b>121.7</b>	UNICOM <b>122.95</b>
-------------------------	---------------------------------------	---	-------------------------	-------------------------



ELEV 62	<b>D</b>	TDZE 55
---------	----------	---------



2300	MUSK	VGSi and RNAV glidepath not coincident (VGSi Angle 3.00/TCH 69).				KLIDE	
		HILUD 2.7 NM to RWY 30R	COKOR	KIRVE	ZULUP	4000	
		1.6 NM to RWY 30R	2000	2600	3600	GP 3.00° TCH 55	
		1.6 NM	1.1 NM	3.2 NM	2.3 NM	3.7 NM	3.3 NM
CATEGORY	A	B	C	D			
LPV DA	255-3/4		200 (200-3/4)				
LNAV/VNAV DA	541-13/8		486 (500-13/8)				
LNAV MDA	640-1	585 (600-1)		640-13/4	585 (600-13/4)		
CIRCLING	640-1 578 (600-1)	700-1 638 (700-1)	700-13/4 638 (700-13/4)	700-2 638 (700-2)			

SW-2, 22 JAN 2026 to 19 FEB 2026

SW-2, 22 JAN 2026 to 19 FEB 2026