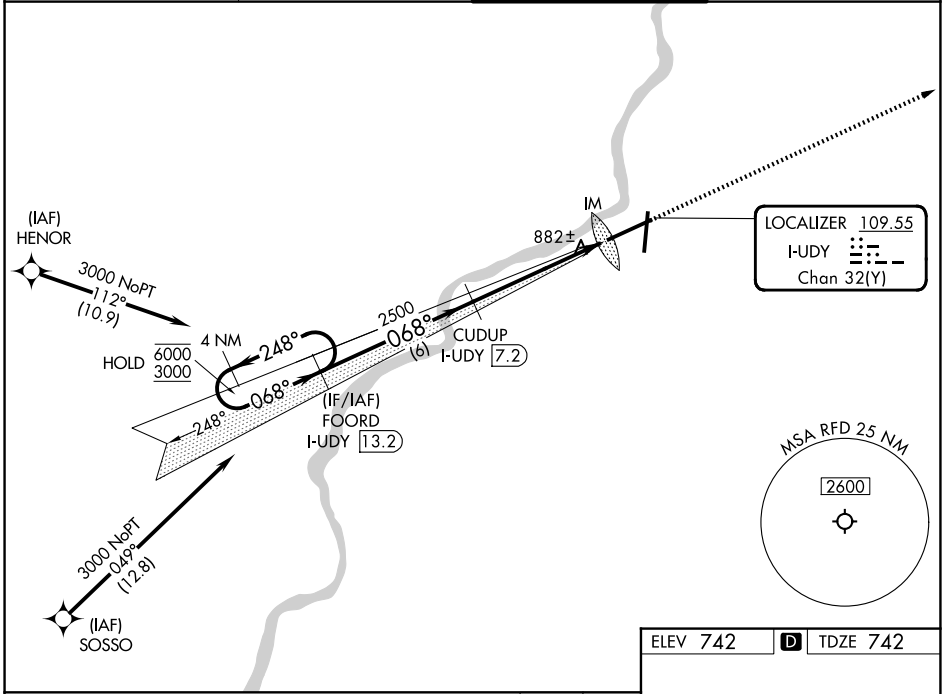


LOC/DME I-UDY 109.55 Chan 32 (Y)	APP CRS 068°	Rwy Ldg 10002 TDZE 742 Apt Elev 742
--	------------------------	--

ILS RWY 7 (SA CAT I)
CHICAGO/ROCKFORD INTL (RFD)

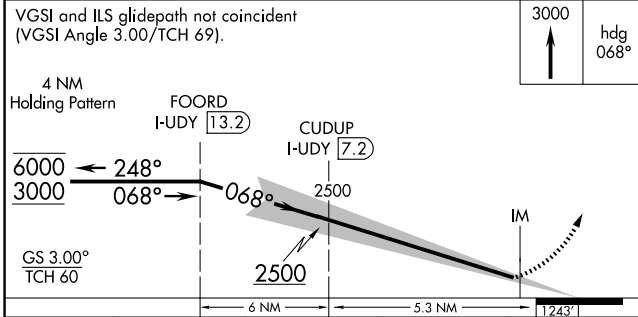
RNP APCH - GPS. From HENOR or SOSSO. RADAR required.		ALS-F-2	MISSED APPROACH: Climb to 3000 on heading 068°. Expect RADAR vectors. (RADAR required).
ASR	Requires specific OPSPEC, MSPEC, or LOA approval.		

ATIS 127.6	ROCKFORD APP CON 121.0 327.0	ROCKFORD TOWER 118.1 290.375	GND CON 121.9 290.375
----------------------	--	--	---------------------------------

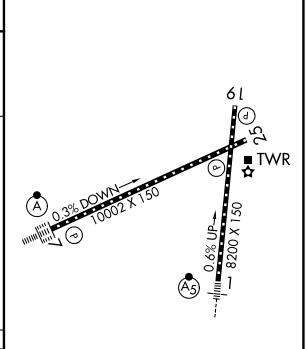


EC-3, 22 JAN 2026 to 19 FEB 2026

EC-3, 22 JAN 2026 to 19 FEB 2026



ELEV 742	D TDZE 742
----------	-------------------



CATEGORY	A	B	C	D
----------	---	---	---	---

S-ILS 7	RA 164/14 150 DA 892
---------	----------------------

SA CATEGORY I ILS - SPECIAL AIRCREW & AIRCRAFT CERTIFICATION REQUIRED

REIL Rwy's 19 and 25
HIRL Rwy's 1-19 and 7-25
TDZ/CL Rwy's 1 and 7