

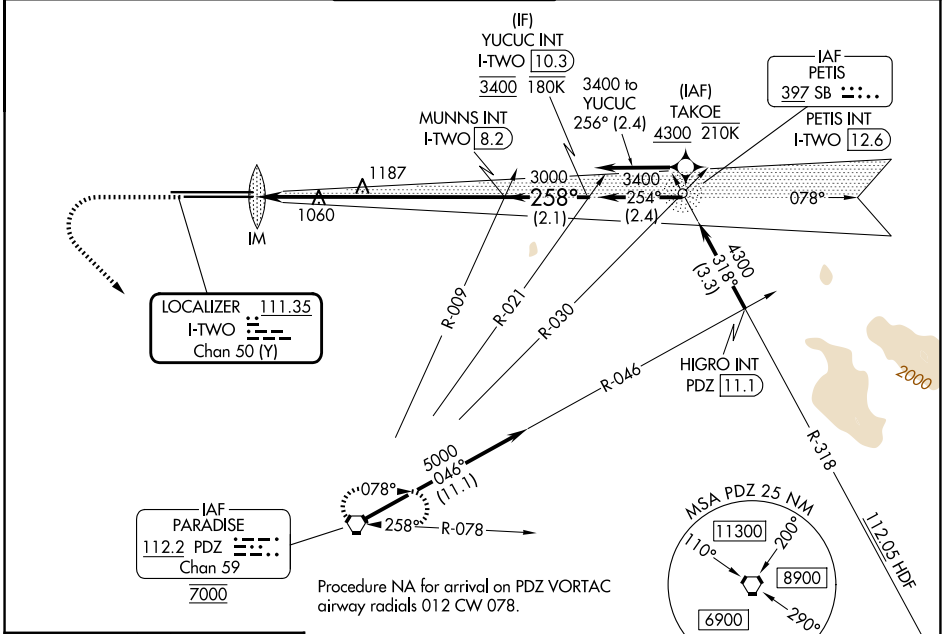
LOC/DME I-TWO 111.35 Chan 50(Y)	APP CRS 258°	Rwy Ldg TDZE 10200 926 Apt Elev 944
---	------------------------	--

ILS RWY 26L (CAT II & III)

ONTARIO INTL (ONT)

RNP APCH - GPS. From TAKOE.	ALSIF-2 	MISSED APPROACH: Climb to 2800 then climbing left turn to 5400 direct PDZ VORTAC and hold, continue climb-in-hold to 5400.
-----------------------------	-------------	--

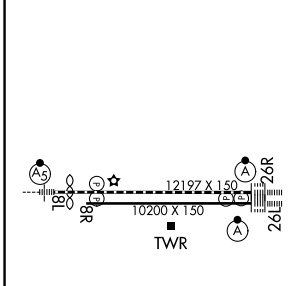
D-ATIS 124.25	SOCAL APP CON 127.0 318.2	ONTARIO TOWER 120.6 360.775	GND CON 121.9 257.8	CLNC DEL 132.9	CPDLC
-------------------------	-------------------------------------	---------------------------------------	-------------------------------	--------------------------	-------



SW-3, 22 JAN 2026 to 19 FEB 2026

SW-3, 22 JAN 2026 to 19 FEB 2026

ELEV 944	D	TDZE 926
----------	----------	----------



2800	5400	PDZ	VGS1 and ILS glidepath not coincident (VGS1 Angle 3.00/TCH 74).	YUCUC INT I-TWO 10.3
MUNNS INT I-TWO 8.2				
3000 258° 3400				
IM 1025				
GS 3.00° TCH 58				
11.63' 6.3 NM 2.1 NM				

CATEGORY	A	B	C	D
S-ILS 26L	CAT II RA 103/12 100 DA 1026			
S-ILS 26L	CAT III RVR 06			

CATEGORY II & III ILS - SPECIAL AIRCREW & AIRCRAFT CERTIFICATION REQUIRED

TDZ/CL Rwy's 8L, 26L and 26R
 HIRL Rwy's 8L-26R and 8R-26L