

KARR SEVEN DEPARTURE (RNAV)

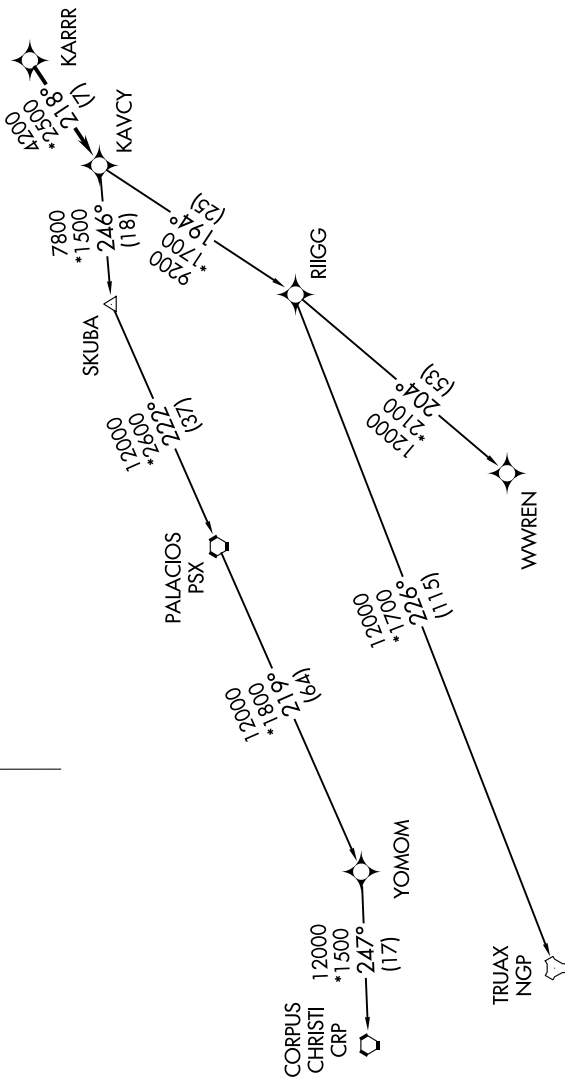
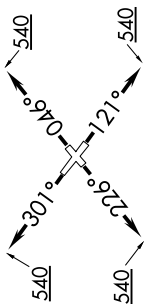
SC-5, 22 JAN 2026 to 19 FEB 2026

RNAV-1 DME/DME/IRU or GPS.
RADAR required.

**TOP ALTITUDE:
ASSIGNED BY ATC**

CTAF
122.7
CLNC DEL
125.6
HOUSTON DEP CON
134.45 284.0

TAKEOFF MINIMUMS
Rwys 5, 12, 23, 30:
Standard with minimum climb of 500' per NM to 540.



(NARRATIVE ON FOLLOWING PAGE)

NOTE: Chart not to scale.

SC-5, 22 JAN 2026 to 19 FEB 2026