

WAAS CH 82335 W19A	APP CRS 189°	Rwy Ldg TDZE Apt Elev	5000 1077 1077
--	------------------------	-----------------------------	---

RNAV (GPS) RWY 19

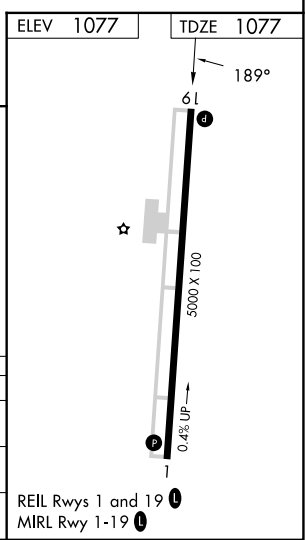
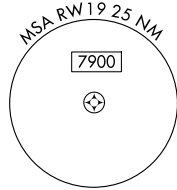
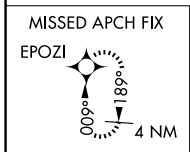
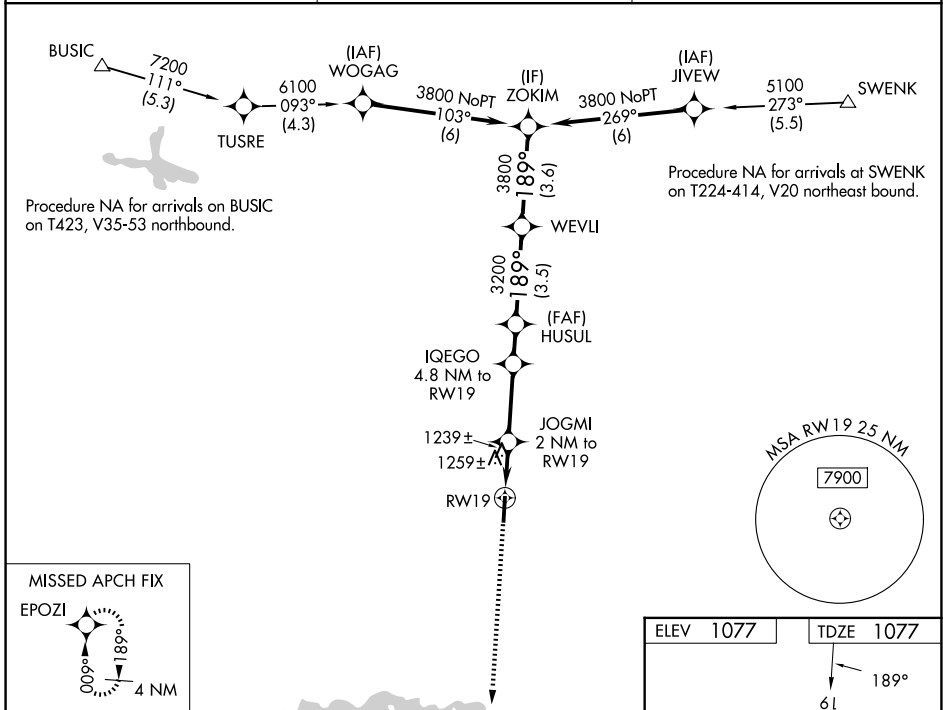
RUTHERFORD COUNTY/MARCHMAN FLD (FQD)

RNP APCH - GPS.

When local altimeter setting not received, use EHO altimeter setting and increase all MDAs 80 feet and LNAV visibility Cat C/D 1/8 SM and LP visibility Cat C/D 1/8 SM, and Circling visibility Cat C/D 1/8 SM. VDP NA when using EHO altimeter setting.

MISSED APPROACH:
Climb to 3000 direct EPOZI and hold.

AWOS-3 118.275	GREER APP CON ★ 119.4 350.2	UNICOM 122.8 (CTAF) 0
--------------------------	---------------------------------------	---------------------------------



3000	EPOZI						
		JOGMI 2 NM to RW19	IQEGO 4.8 NM to RW19	HUSUL	WEVLI	ZOKIM	
		1.1 NM to RW19	2720	3200	3800	3800	
		1780	3.15° TCH 40				
		1.1	0.9	2.8 NM	1.4 NM	3.5 NM	3.6 NM
CATEGORY		A	B	C	D		
LP MDA		1500-1	423 (500-1)	1500-1¼	423 (500-1¼)		
LNAV MDA		1520-1	443 (500-1)	1520-1¾	443 (500-1¾)		
CIRCLING		1560-1	1620-1	1660-1½	1820-2½		
		483 (500-1)	543 (600-1)	583 (600-1½)	743 (800-2½)		

SE-2, 22 JAN 2026 to 19 FEB 2026

SE-2, 22 JAN 2026 to 19 FEB 2026