

APP CRS <b>130°</b>	Rwy Ldg <b>3900</b>
	TDZE <b>408</b>
	Apt Elev <b>412</b>

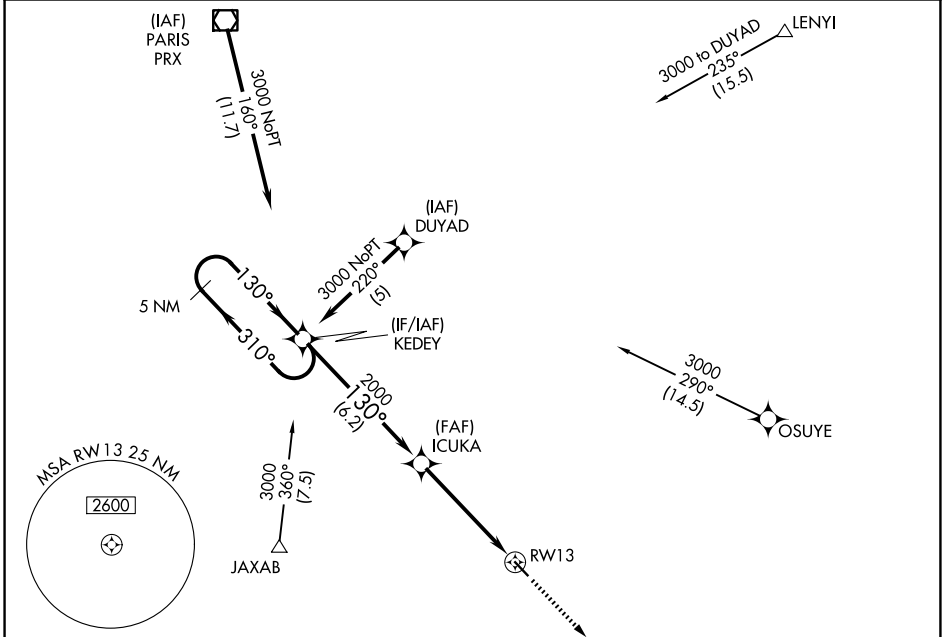
# RNAV (GPS) RWY 13

FRANKLIN COUNTY (F53)

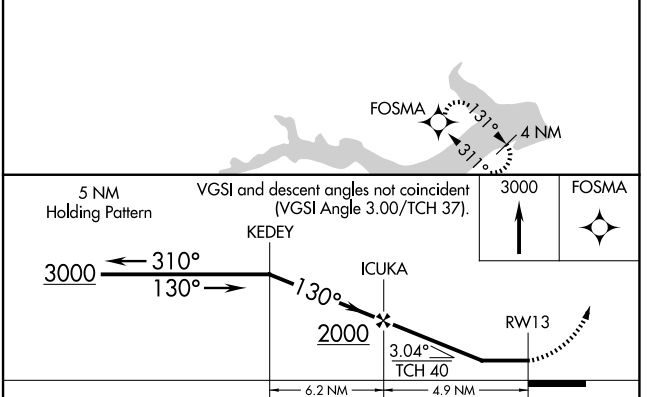
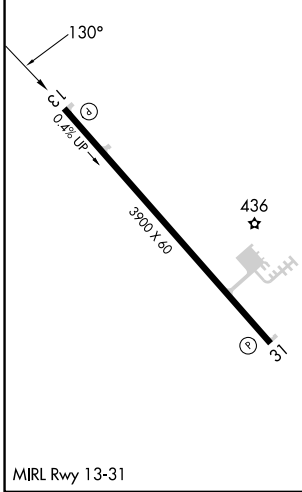
**NA** DME/DME RNP-0.3 NA. Use Mount Pleasant Rgnl altimeter setting; if not received, procedure NA. Procedure NA at night. Helicopter visibility reduction below 1 SM NA.

MISSED APPROACH: Climb to 3000 direct FOSMA and hold.

OSA AWOS-3 <b>119.775</b>	FORT WORTH CENTER <b>132.025 317.75</b>	UNICOM <b>123.0</b> (CTAF)
------------------------------	--	-------------------------------



ELEV <b>412</b>	TDZE <b>408</b>
-----------------	-----------------



CATEGORY	A	B	C	D
LNAV MDA	820-1	412 (500-1)		NA
CIRCLING	940-1 528 (600-1)	980-1 568 (600-1)		NA

SC-2, 22 JAN 2026 to 19 FEB 2026

SC-2, 22 JAN 2026 to 19 FEB 2026