

| | | |
|--|------------------------|---|
| WAAS CH 99311 W12A | APP CRS 123° | Rwy Ldg 4000 TDZE 42 Apt Elev 42 |
|--|------------------------|---|

RNAV (GPS) RWY 12

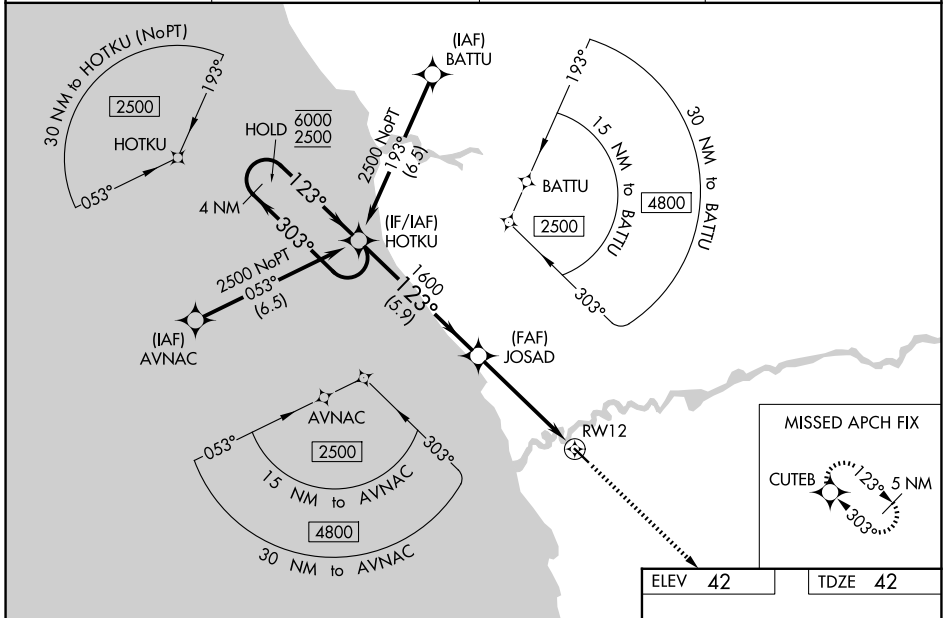
QUINHAGAK (AQH) (PAQH)

RNP APCH.

▼ Procedure NA at night. Baro-VNAV and VDP NA when using Kipnuk altimeter setting. For uncompensated Baro-VNAV systems, LNAV/VNAV NA below -21°C or above 54°C. When local altimeter setting not received, use Kipnuk altimeter setting and increase all DA and MDA 160 feet; increase LPV all Cats visibility and LNAV/VNAV all Cats visibility 1/8 SM, LNAV Cats C, D visibility 3/8 SM, increase Circling Cat C visibility 1/2 SM, increase Circling Cat D visibility 1/4 SM.

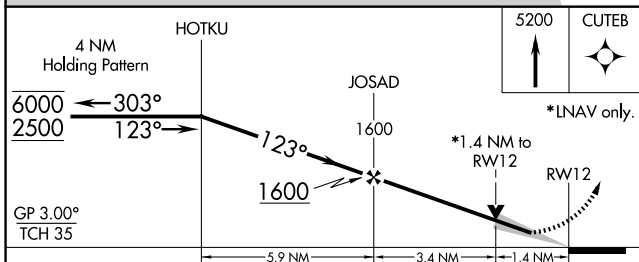
MISSED APPROACH: Climb to 5200 direct CUTEB and hold, continue climb-in-hold to 5200.

| | | | |
|---------------------------|--|-----------------------------|---------------------------------|
| AWOS-3P 121.575 | ANCHORAGE CENTER 125.2 372.0 | KENAI RADIO 122.1 | UNICOM 122.8 (CTAF) 0 |
|---------------------------|--|-----------------------------|---------------------------------|



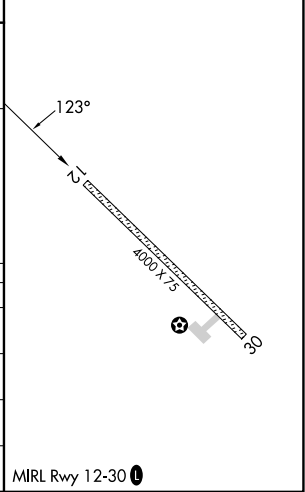
AK, 22 JAN 2026 to 19 MAR 2026

AK, 22 JAN 2026 to 19 MAR 2026



| | |
|---------|---------|
| ELEV 42 | TDZE 42 |
|---------|---------|

| CATEGORY | A | B | C | D |
|--------------|-------|-------------|------------------------------|----------------------|
| LPV DA | | 292-1 | 250 (300-1) | |
| LNAV/VNAV DA | | 292-1 | 250 (300-1) | |
| LNAV MDA | 500-1 | 458 (500-1) | 500-1 3/8 | 458 (500-1 3/8) |
| CIRCLING | 500-1 | 458 (500-1) | 580-1 1/2 538 (600-1 1/2) | 600-2 558 (600-2) |



MIRL Rwy 12-30 0