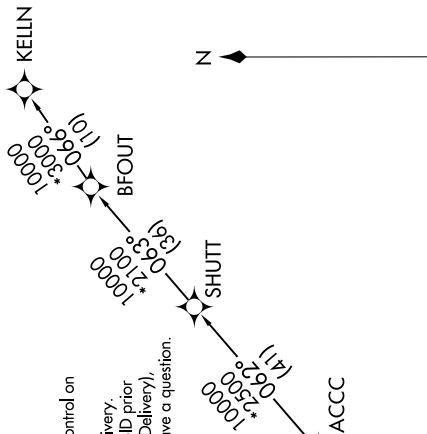


TOP ALTITUDE:  
10000



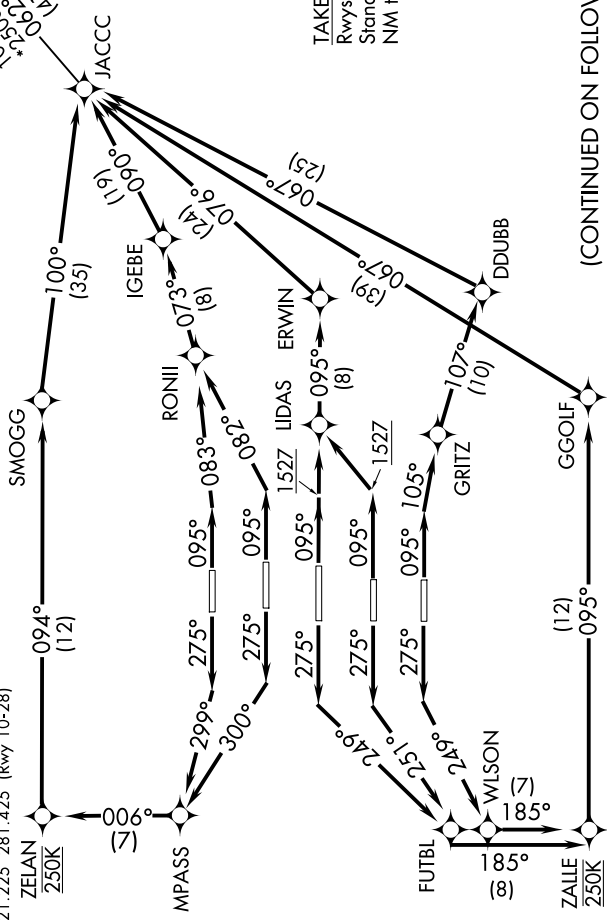
**TAKEOFF MINIMUMS:**  
 Rwy 8L/R, 9L/R, 10, 26L/R, 27L/R, 28:  
 Standard with minimum climb of 500' per  
 NM to 1527.

NOTE: Chart not to scale.

SE-4, 19 FEB 2026 to 19 MAR 2026

- NOTE: If unable to accept climb rate, advise Clearance Delivery on initial contact.
- NOTE: Use departure frequency depicted unless otherwise advised.
- NOTE: For Turboprop aircraft only.
- NOTE: DME/DME/IRU or GPS Required.
- NOTE: NAV 1.
- NOTE: RADAR Required for non-GPS equipped aircraft.
- NOTE: Accelerate to 250K, if unable, advise both tower and Departure Control on initial contact.
- NOTE: Transponder code will be issued via PDC or Atlanta Clearance Delivery.
- NOTE: Aircraft at Midfield Ramps will advise Ramp Towers of departure SID prior to pushback. Upon receipt of ATC clearance (from ATL Clearance Delivery), read back only your call sign and transponder code, unless you have a question.

- D-ATIS 125.55
- CLNC DEL 118.1
- CPDLC
- GND CON
- 121.9 254.4 (Rwys 8L-26R, 8R-26L)
- 121.75 254.4 (Rwys 9L-27R, 9R-27L)
- 121.65 254.4 (Rwy 10-28)
- ATLANTA TOWER
- 119.1 254.4 (Rwy 8L-26R)
- 125.325 254.4 (Rwy 8R-26L)
- 119.3 254.4 (Rwy 9R-27L)
- 123.85 254.4 (Rwy 9L-27R)
- 119.5 254.4 (Rwy 10-28)
- ATLANTA DEP CON
- 133.475 281.425 (Rwys 8L-26R, 8R-26L)
- 125.65 281.425 (Rwys 9L-27R, 9R-27L)
- 121.225 281.425 (Rwy 10-28)



(CONTINUED ON FOLLOWING PAGE)

SE-4, 19 FEB 2026 to 19 MAR 2026