

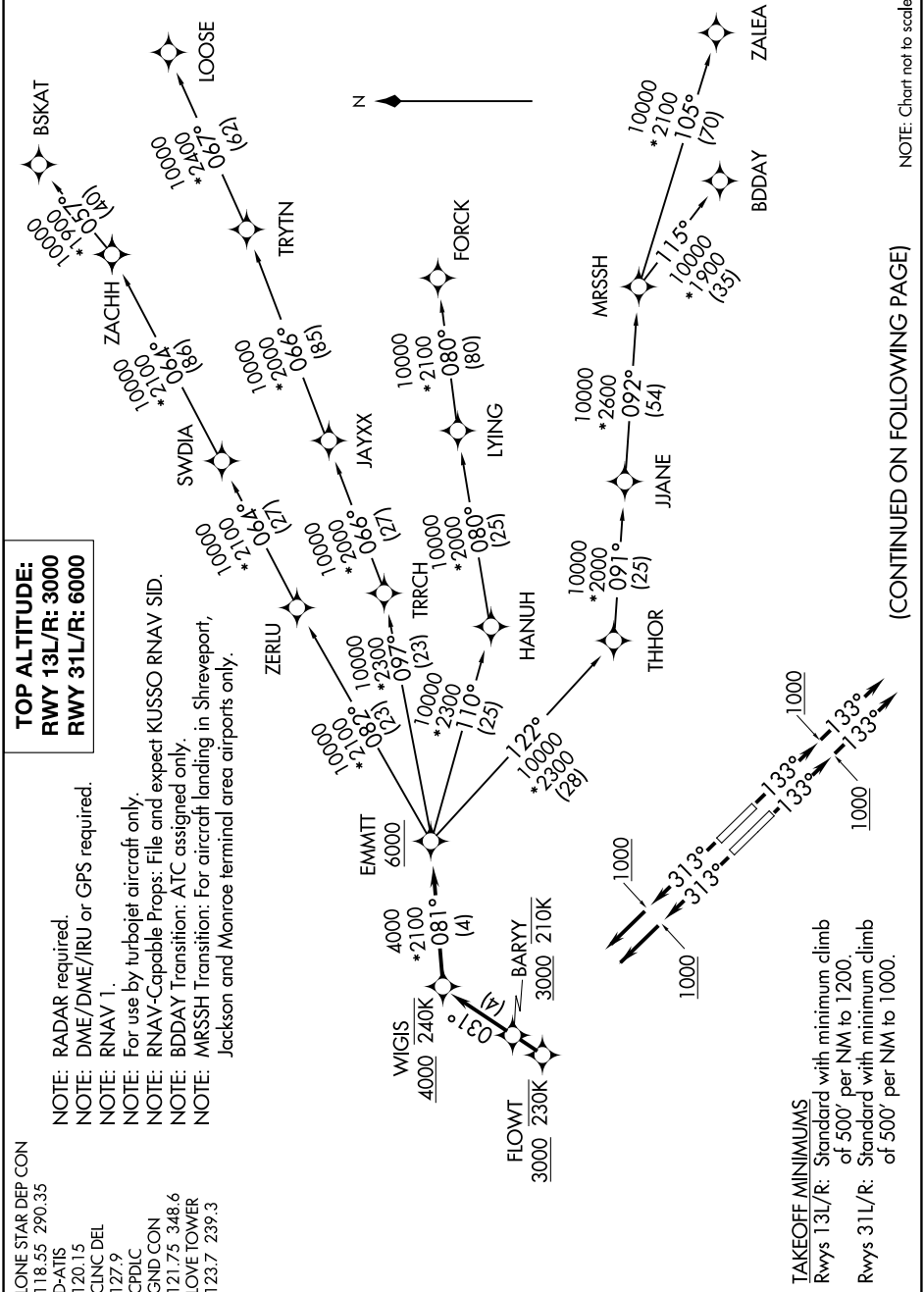
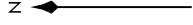
EMMTT FOUR DEPARTURE (RNAV)

SC-2, 19 FEB 2026 to 19 MAR 2026

LONE STAR DEP CON
 118.55 290.35
 D-ATIS
 120.15
 CLNC DEL
 127.9
 CPDLC
 GND CON
 121.75 348.6
 LOVE TOWER
 123.7 239.3

TOP ALTITUDE:
RWY 13L/R: 3000
RWY 31L/R: 6000

NOTE: RADAR required.
 NOTE: DME/DME/IRU or GPS required.
 NOTE: RNAV 1.
 NOTE: For use by turbojet aircraft only.
 NOTE: RNAV-Capable Props: File and expect KUSSO RNAV SID.
 NOTE: BDDAY Transition: ATC assigned only.
 NOTE: MRSSH Transition: For aircraft landing in Shreveport, Jackson and Monroe terminal area airports only.



NOTE: Chart not to scale.

(CONTINUED ON FOLLOWING PAGE)

SC-2, 19 FEB 2026 to 19 MAR 2026

TAKEOFF MINIMUMS
 Rwy 13L/R: Standard with minimum climb of 500' per NM to 1200.
 Rwy 31L/R: Standard with minimum climb of 500' per NM to 1000.