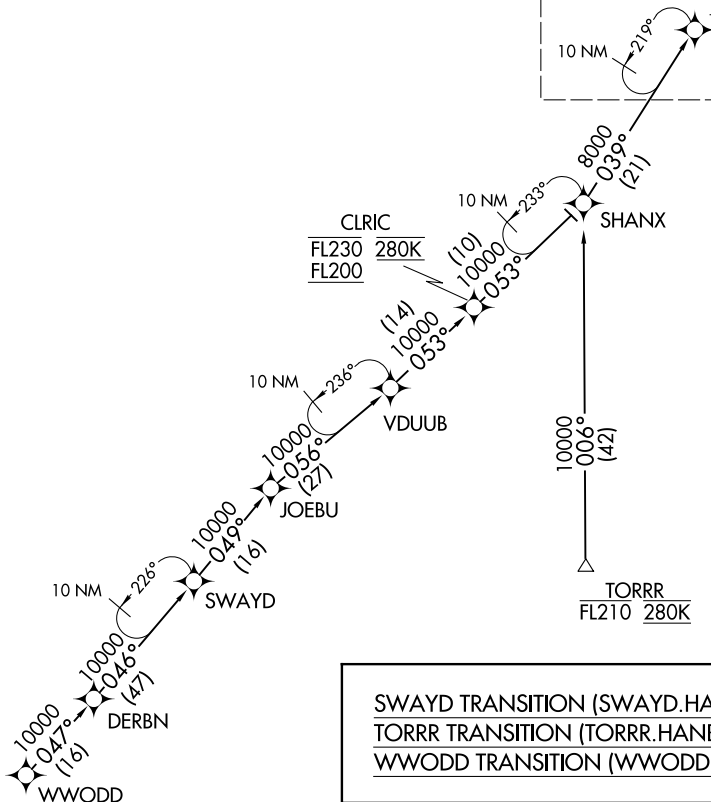


HANBL THREE ARRIVAL (RNAV) Transition Routes

D-ATIS  
133.675  
DETROIT APP CON  
124.975 284.0

See following page  
for arrival routes

HANBL  
FL210 280K  
17000



SWAYD TRANSITION (SWAYD.HANBL3)  
TORRR TRANSITION (TORRR.HANBL3)  
WWODD TRANSITION (WWODD.HANBL3)

- NOTE: RADAR required.
- NOTE: RNAV 1.
- NOTE: DME/DME/IRU or GPS required.
- NOTE: Use Runway 22R transition or as assigned by ATC. Expect runway assignment from Detroit APP CON no later than 10 NM from HEMIE.
- NOTE: For use when DTW landing south or west. When DTW landing north, file and expect the LECTR RNAV STAR.
- NOTE: TORRR Transition for use by CVG/DAY/SDF/LEX terminal area departures at or below FL210 only and ATC use as assigned.

(NARRATIVE ON FOLLOWING PAGE)  
(CONTINUED ON FOLLOWING PAGE)

NOTE: Chart not to scale.

HANBL THREE ARRIVAL (RNAV) Transition Routes