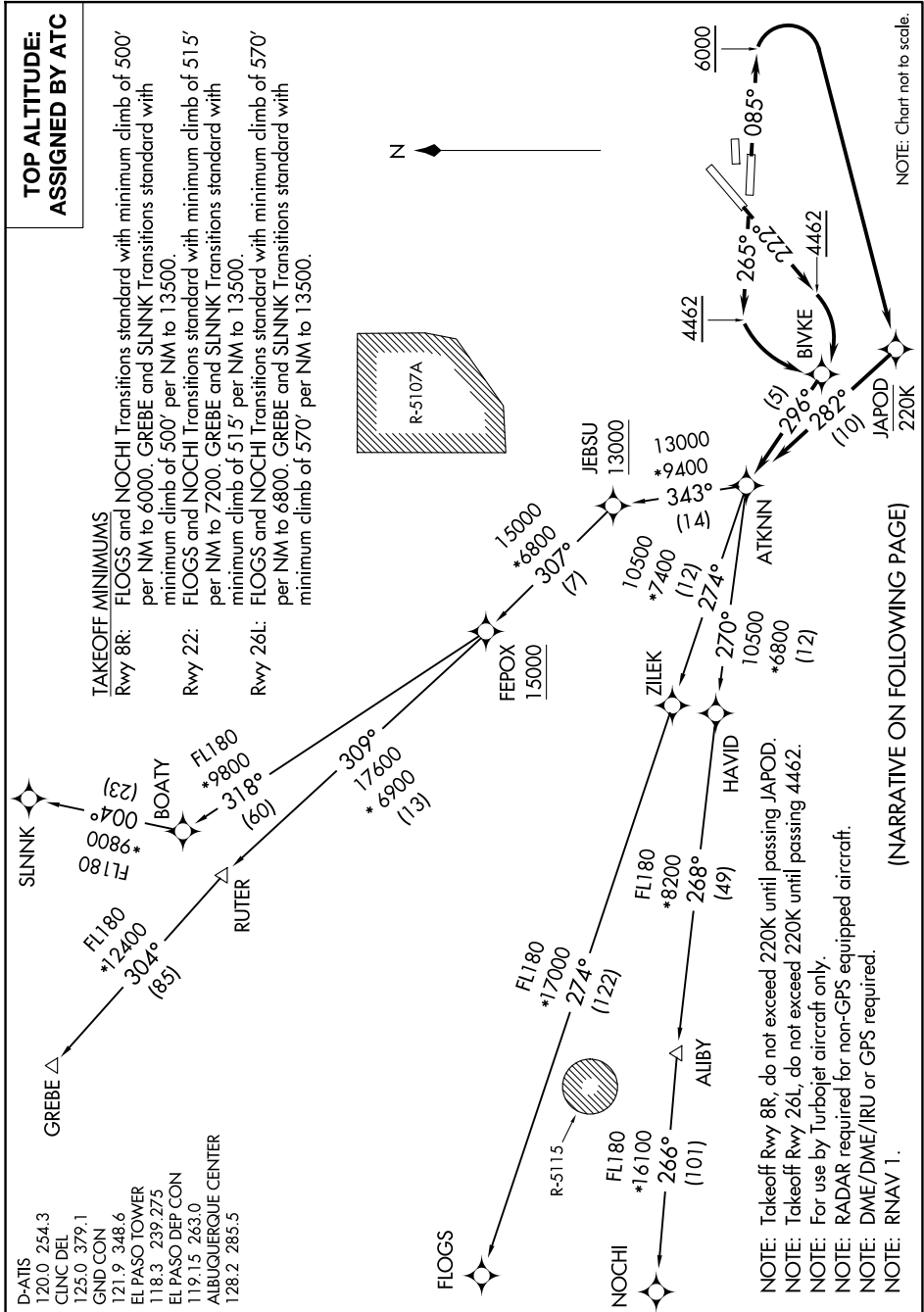


ATKNN FIVE DEPARTURE (RNAV)

TOP ALTITUDE: ASSIGNED BY ATC

TAKEOFF MINIMUMS
 Rwy 8R: FLOGS and NOCHI Transitions standard with minimum climb of 500' per NM to 6000. GREBE and SLINK Transitions standard with minimum climb of 500' per NM to 13500.
 Rwy 22: FLOGS and NOCHI Transitions standard with minimum climb of 515' per NM to 7200. GREBE and SLINK Transitions standard with minimum climb of 515' per NM to 13500.
 Rwy 26L: FLOGS and NOCHI Transitions standard with minimum climb of 570' per NM to 6800. GREBE and SLINK Transitions standard with minimum climb of 570' per NM to 13500.

SC-3, 19 FEB 2026 to 19 MAR 2026



NOTE: Chart not to scale.

(NARRATIVE ON FOLLOWING PAGE)

SC-3, 19 FEB 2026 to 19 MAR 2026

ATKNN FIVE DEPARTURE (RNAV)

(ATKNN5.ATKNN) 21JUL16