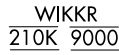
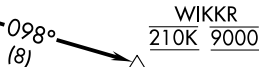
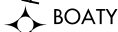
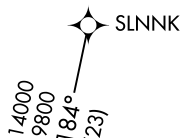


(WAZKO.WAZKO1) 20030  
**WAZKO ONE ARRIVAL (RNAV)**

AL-134 (FAA)

**EL PASO INTL (ELP)**  
 EL PASO, TEXAS

EL PASO D-ATIS  
 120.0 254.3  
 EL PASO APP CON  
 124.25 298.85  
 ALBUQUERQUE CENTER  
 128.2 285.5



- NOTE: RADAR required.
- NOTE: RNAV 1.
- NOTE: DME/DME/IRU or GPS required.
- NOTE: TURBOJET Aircraft only.
- NOTE: Landing Rwy 04 : Expect RNP approach or RADAR vectors to final approach course prior to KOACH.
- NOTE: Landing Rwy 22,26L : Expect RNP approach or RADAR vectors to final approach course prior to WIKKR.

SC-3, 19 FEB 2026 to 19 MAR 2026

SC-3, 19 FEB 2026 to 19 MAR 2026

(NARRATIVE ON FOLLOWING PAGE)

NOTE: Chart not to scale.



**WAZKO ONE ARRIVAL (RNAV)**  
 (WAZKO.WAZKO1) 03APR14

EL PASO, TEXAS  
 EL PASO INTL (ELP)