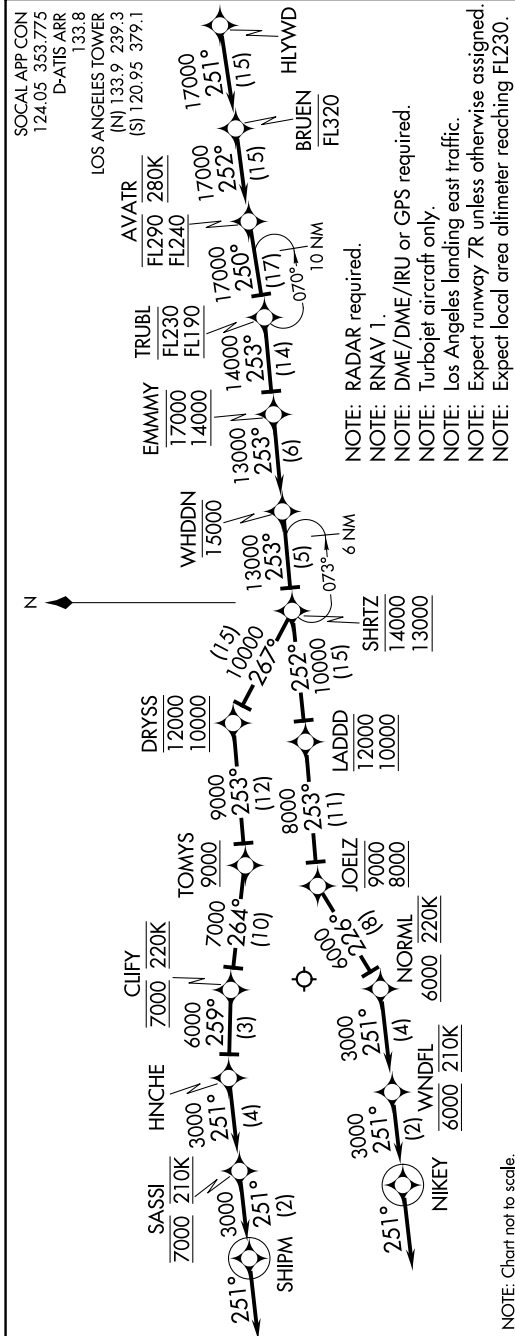


BRUEN TWO ARRIVAL (RNAV) Arrival Routes

SW-3, 19 FEB 2026 to 19 MAR 2026



ARRIVAL ROUTE DESCRIPTION

From HLYWD on track 251° to cross BRUEN at or below FL320, then on track 252° to cross AVATR between FL240 and FL290 and at 280K, then on track 250° to cross TRUBL between FL190 and FL230, then on track 253° to cross EMMMY between 14000 and 17000, then on track 253° to cross WHDDN at or below 15000, then on track 253° to cross SHIRTZ between 13000 and 14000.

LANDING RUNWAYS 6L/R: From SHIRTZ on track 267° to cross DRYSS between 10000 and 12000, then on track 253° to cross TOMYS at or above 9000, then on track 264° to cross CLIFY at 7000 and at 220K, then on track 259° to HNCHE, then on track 251° to cross SASSI at 7000 and at 210K, then on track 251° to SHIPM, then on track 251°. Expect RADAR vectors to ILS or RNAV (RNP) RWY 6L final approach course.

LANDING RUNWAYS 7L/R: From SHIRTZ on track 252° to cross LADDD between 10000 and 12000, then on track 253° to cross JOELZ between 8000 and 9000, then on track 226° to cross NORML at or above 6000 and at 220K, then on track 251° to cross WNDFL at 6000 and at 210K, then on track 251° to NIKEY, then on track 251°. Expect RADAR vectors to ILS or RNAV (RNP) RWY 7R final approach course.

LOST COMMUNICATIONS: In the event of lost communication proceed on the RNAV (RNP) RWY 7R or ILS or LOC RWY 7R approach.

SW-3, 19 FEB 2026 to 19 MAR 2026