

DARRK THREE DEPARTURE (RNAV)

AL-237 (FAA)

LOS ANGELES INTL (LAX)
LOS ANGELES, CALIFORNIA

SW-3, 19 FEB 2026 to 19 MAR 2026

**TOP ALTITUDE:
FL230**

TAKEOFF MINIMUMS

Rwys 6L/R, 7L/R: NA - ATC.
Rwys 24L/R, 25L/R: Standard with minimum climb
of 500' per NM to 640'.

SOCAL DEP CON
125.2 323.275
D-ATIS DEP
135.65
CINC DEL
120.35 327.0
CPDIC
GND CON
(N) 121.65 327.0
(S) 121.75 327.0
(W) 121.4 327.0
LOS ANGELES TOWER
(N) 133.9 239.3
(S) 120.95 379.1

NOTE: RNAV 1.

NOTE: RADAR required.

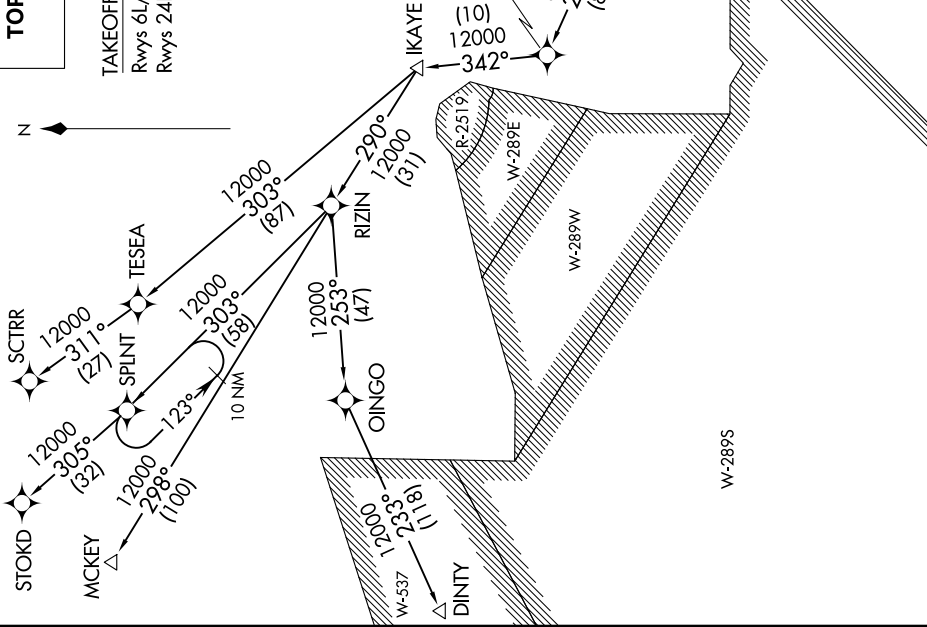
NOTE: STOKD, SCTRR and MCKEY transitions:

DME/DME/IRU or GPS required.

NOTE: DINTY transitions: GPS only.

NOTE: Turbojet aircraft only.

NOTE: File the RIZIN TRANSITION in lieu of the LADYJ DEPARTURE during
time periods 2100-0700 LCL. All other times RIZIN TRANSITION ATC
assigned only.



(CONTINUED ON FOLLOWING PAGE)

NOTE: Chart not to scale.

SW-3, 19 FEB 2026 to 19 MAR 2026

DARRK THREE DEPARTURE (RNAV)

LOS ANGELES, CALIFORNIA
LOS ANGELES INTL (LAX)