

# DOTSS TWO DEPARTURE (RNAV)

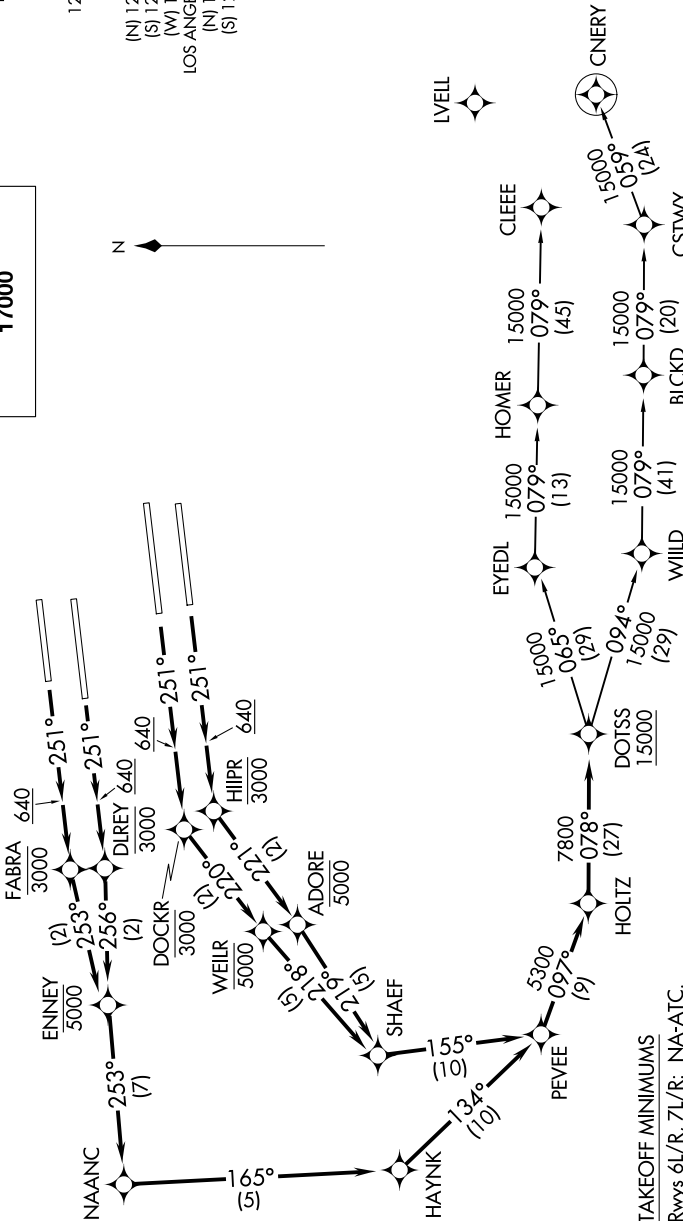
AL-237 (FAA)

LOS ANGELES INTL (LAX)  
LOS ANGELES, CALIFORNIA

SOCAL DEP CON  
124.3 363.2  
D-ATIS DEP  
135.65  
CLNC DEL  
120.35 327.0  
CPDLC  
GND CON  
(N) 121.65 327.0  
(S) 121.75 327.0  
(M) 121.4 327.0  
LOS ANGELES TOWER  
(N) 133.9 239.3  
(S) 120.95 379.1



**TOP ALTITUDE:  
17000**



### TAKEOFF MINIMUMS

Rwys 6L/R, 7L/R: NA-ATC.  
Rwys 24L/R, 25L/R: Standard with minimum climb of 500' per NM to 640.

- NOTE: DME/DME/IRU or GPS required.
- NOTE: RADAR required.
- NOTE: RNAV 1.
- NOTE: Turbojet aircraft only.
- NOTE: Turn at HIIPR and DOCKR are required for ATC separation.

(CONTINUED ON FOLLOWING PAGE)

NOTE: Chart not to scale.

# DOTSS TWO DEPARTURE (RNAV)

LOS ANGELES, CALIFORNIA  
LOS ANGELES INTL (LAX)