

SW-3, 19 FEB 2026 to 19 MAR 2026

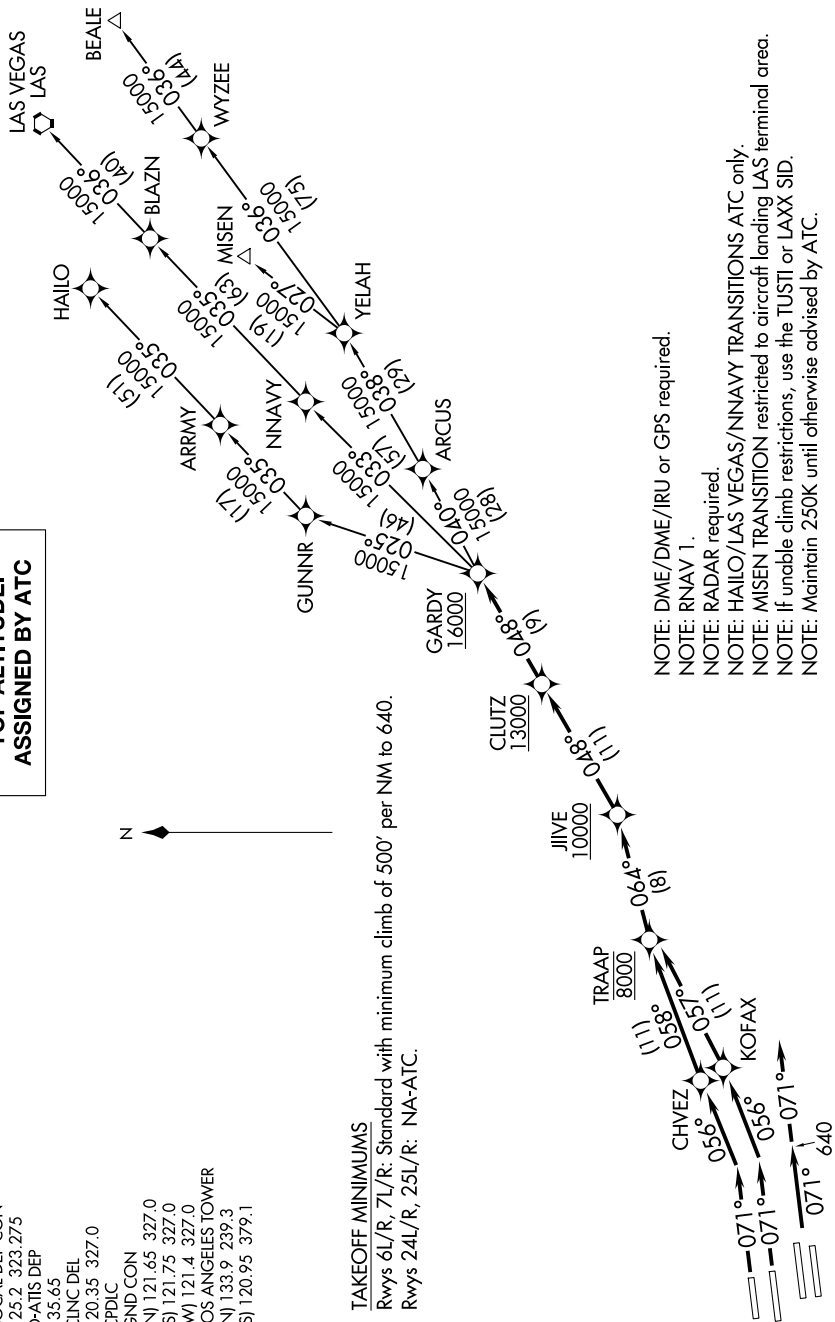
**TOP ALTITUDE:
ASSIGNED BY ATC**

SOCAL DEP CON
125.2 323.275
D-ATIS DEP
135.65
CLNC DEL
120.35 327.0
CFDLC
GND CON
(N) 121.65 327.0
(S) 121.75 327.0
(W) 121.4 327.0
LOS ANGELES TOWER
(N) 133.9 239.3
(S) 120.95 379.1



TAKEOFF MINIMUMS

Rwys 6L/R, 7L/R: Standard with minimum climb of 500' per NM to 640.
Rwys 24L/R, 25L/R: NA-ATC.



(CONTINUED ON FOLLOWING PAGE)

SW-3, 19 FEB 2026 to 19 MAR 2026

NOTE: Chart not to scale.