

LAXX ONE DEPARTURE

AL-237 (FAA)

LOS ANGELES INTL (LAX)
LOS ANGELES, CALIFORNIA

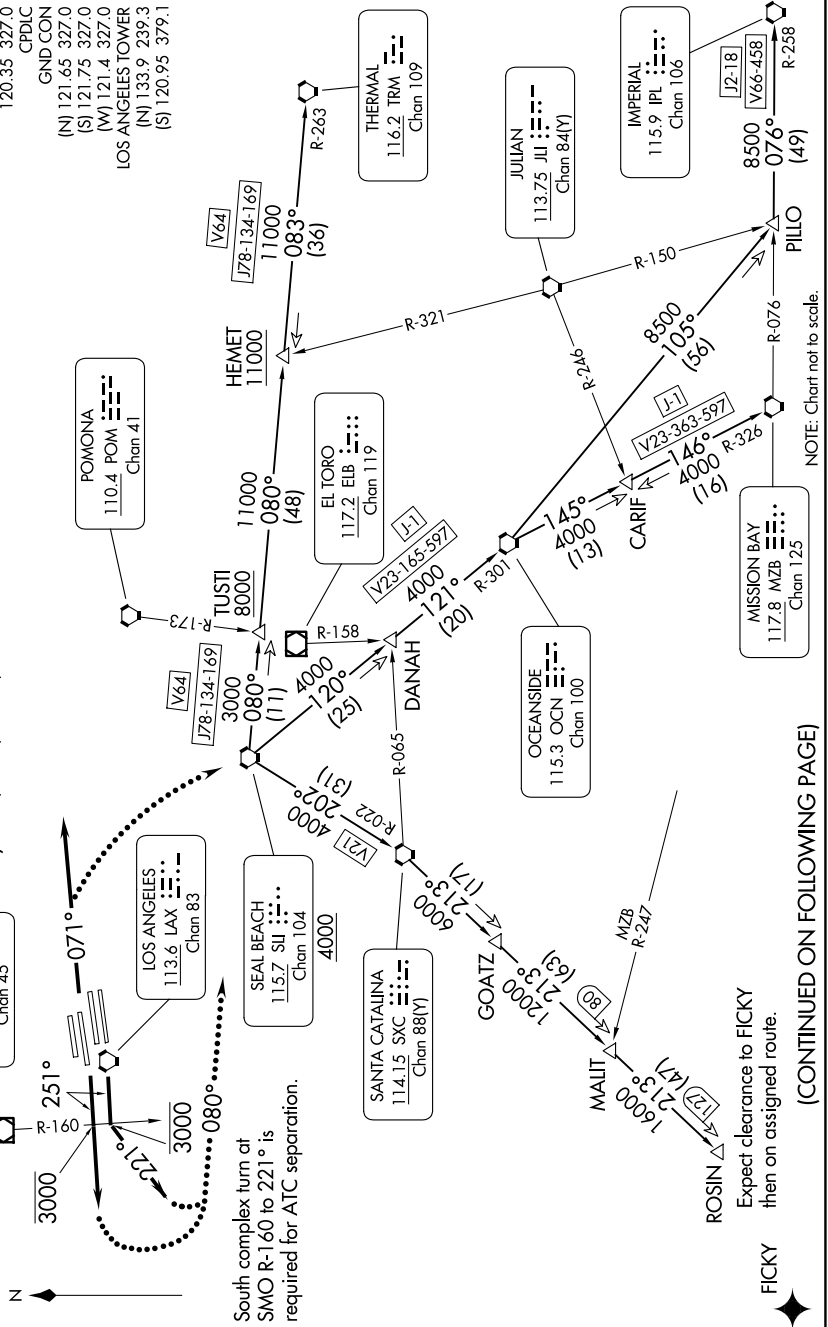
SW-3, 19 FEB 2026 to 19 MAR 2026

**TOP ALTITUDE:
ASSIGNED BY ATC**

SOCAL DEP CON
124.3 363.2
D-ATIS DEP
135.65
CLINC DEL
120.35 327.0
CPDIC
GND CON
(N) 121.65 327.0
(S) 121.75 327.0
(W) 121.4 327.0
LOS ANGELES TOWER
(N) 133.9 239.3
(S) 120.95 379.1

NOTE: This departure is for
turbojet aircraft only.
NOTE: RADAR and DME required.

TAKEOFF MINIMUMS
Rwy 6L/R, 7L/R, 24L/R, 25L/R: Standard.



South complex turn at
SMO R-160 to 221° is
required for ATC separation.

Expect clearance to FICKY
then on assigned route.

FICKY

(CONTINUED ON FOLLOWING PAGE)

NOTE: Chart not to scale.

SW-3, 19 FEB 2026 to 19 MAR 2026

LAXX ONE DEPARTURE