

SW-3, 19 FEB 2026 to 19 MAR 2026

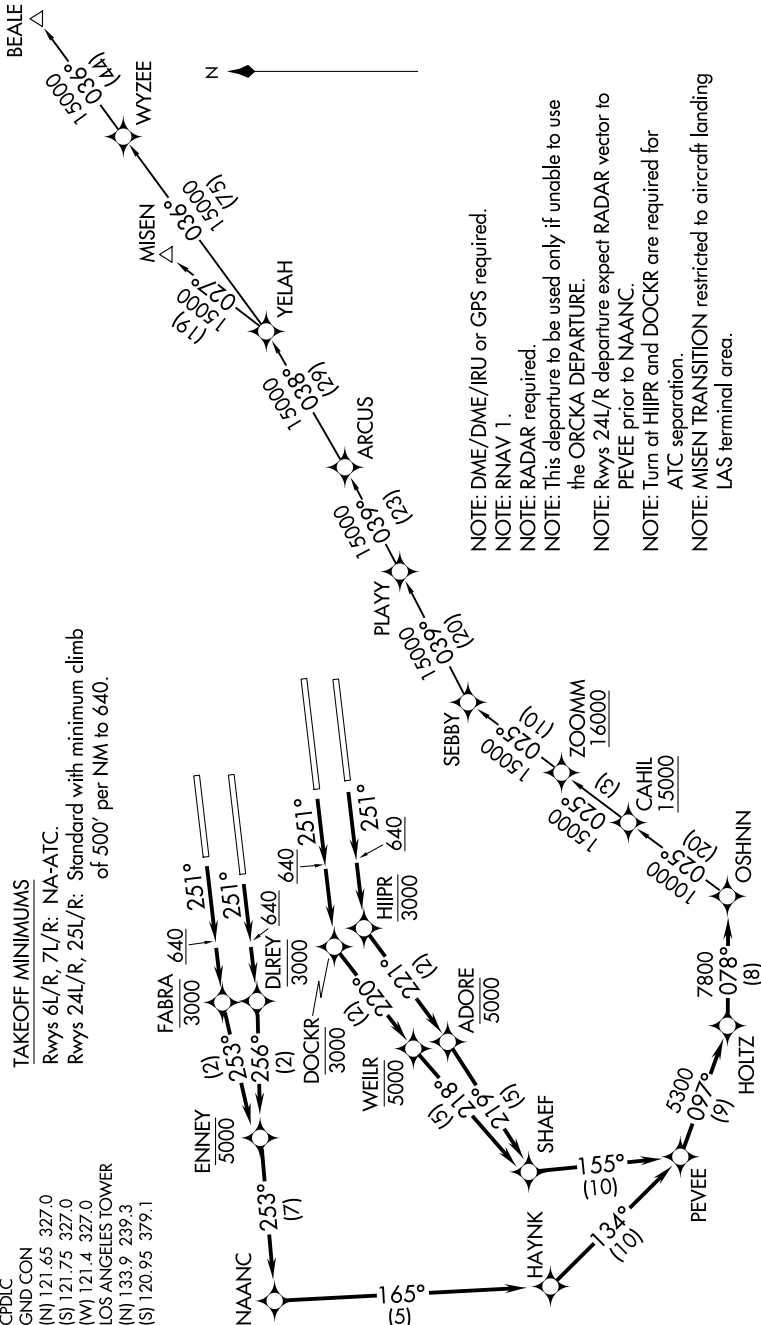
**TOP ALTITUDE:  
17000**

SOCAL DEP CON  
124.3 363.2  
D-ATIS DEP  
135.65  
CLINC DEL  
120.35 327.0  
CPBLC  
GND CON  
(N) 121.65 327.0  
(S) 121.75 327.0  
(W) 121.4 327.0  
LOS ANGELES TOWER  
(N) 133.9 239.3  
(S) 120.95 379.1

**TAKEOFF MINIMUMS**

Rwys 6L/R, 7L/R: NA-ATC.

Rwys 24L/R, 25L/R: Standard with minimum climb of 500' per NM to 640.



NOTE: DME/DME/IRU or GPS required.  
NOTE: RNAV 1.  
NOTE: RADAR required.  
NOTE: This departure to be used only if unable to use the ORCKA DEPARTURE.  
NOTE: Rwys 24L/R departure expect RADAR vector to PEVEE prior to NAANC.  
NOTE: Turn at HJIPR and DOCKR are required for ATC separation.  
NOTE: MISEN TRANSITION restricted to aircraft landing LAS terminal area.

(CONTINUED ON FOLLOWING PAGE)

NOTE: Chart not to scale.

SW-3, 19 FEB 2026 to 19 MAR 2026