

STHBY ONE DEPARTURE (RNAV) (Transition Routes)

SW-3, 19 FEB 2026 to 19 MAR 2026

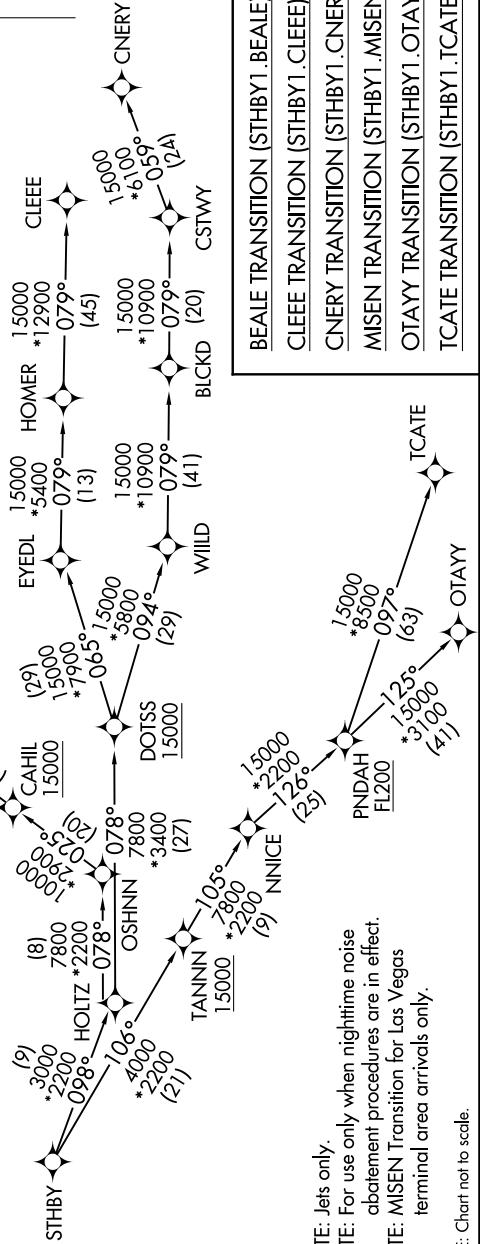
RNAV 1 - DME/DME/IRU or GPS.
RADAR required for non-GPS equipped aircraft.

**TOP ALTITUDE:
OTAY and TCATE TRANSITIONS:
ASSIGNED BY ATC;
BEALE, CLEEE, MISEN AND
CNERY TRANSITIONS: 17000**

TAKEOFF MINIMUMS

- Rwy 24L: Standard with minimum climb of 280' per NM to 628.
- Rwy 24R: Standard with minimum climb of 260' per NM to 628.
- Rwy 25L: Standard with minimum climb of 230' per NM to 628.
- Rwy 25R: Standard with minimum climb of 260' per NM to 628.

SOCAL DEP CON
124.3 363.2
D-ATIS DEP
135.65
CLINC DEL
120.35 327.0
CPDIC
GND CON
(N) 121.65 327.0
(S) 121.75 327.0
(W) 121.4 327.0
LOS ANGELES TOWER
(N) 133.9 239.3
(S) 120.95 379.1



BEALE TRANSITION (STHBY1 .BEALE)
CLEEE TRANSITION (STHBY1 .CLEEE)
CNERY TRANSITION (STHBY1 .CNERY)
MISEN TRANSITION (STHBY1 .MISEN)
OTAY TRANSITION (STHBY1 .OTAY)
TCATE TRANSITION (STHBY1 .TCATE)

NOTE: Jets only.
NOTE: For use only when nighttime noise abatement procedures are in effect.
NOTE: MISEN Transition for Las Vegas terminal area arrivals only.

NOTE: Chart not to scale.

SW-3, 19 FEB 2026 to 19 MAR 2026