

TRTON TWO DEPARTURE (RNAV)

AL-237 (FAA)

LOS ANGELES INTL (LAX)
LOS ANGELES, CALIFORNIA

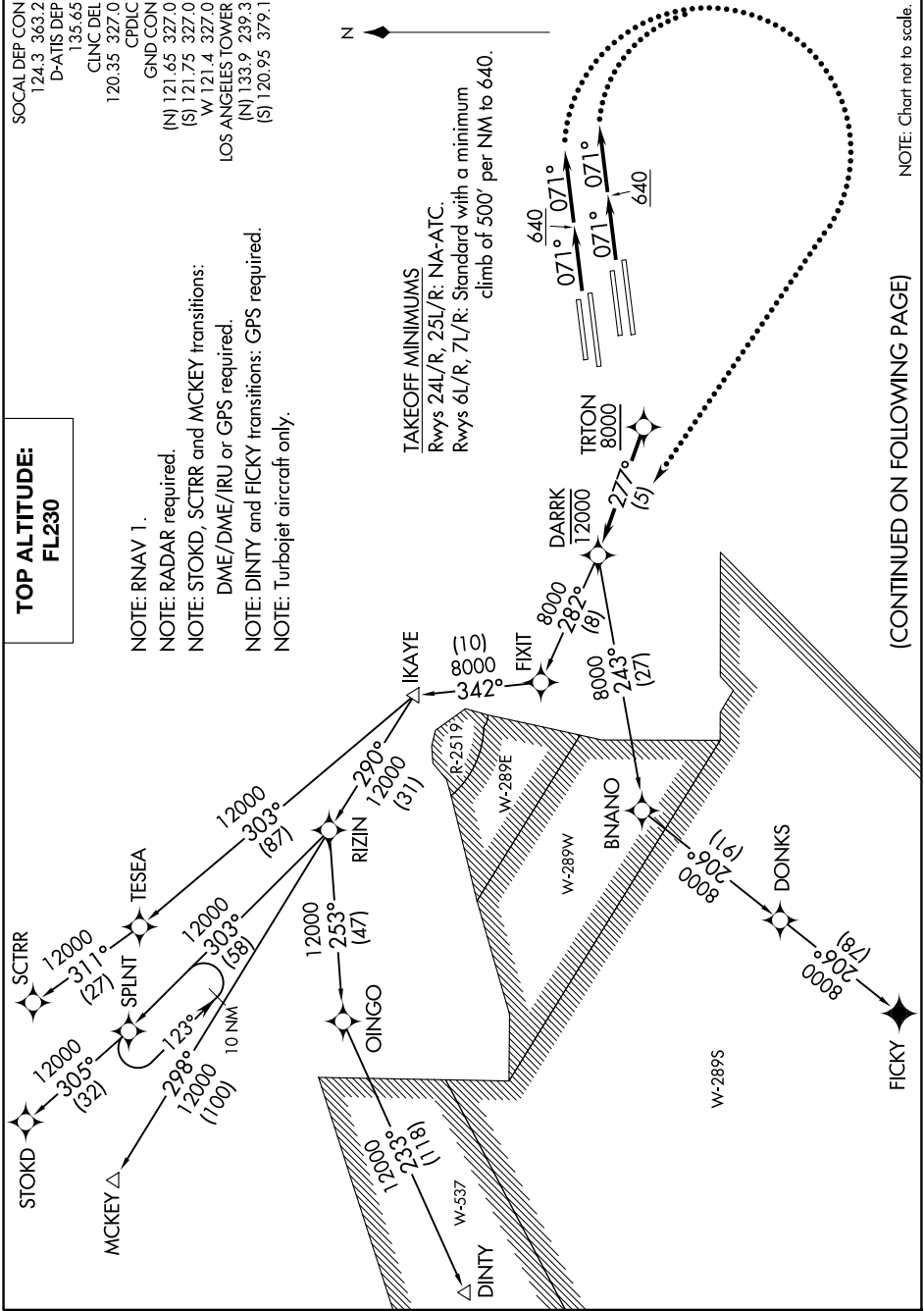
SW-3, 19 FEB 2026 to 19 MAR 2026

**TOP ALTITUDE:
FL230**

SOCAL DEP CON
124.3 363.2
D-ATIS DEP
135.65
CINC DEL
120.35 327.0
CPDC
GND CON
(N) 121.65 327.0
(S) 121.75 327.0
W 121.4 327.0
LOS ANGELES TOWER
(N) 133.9 239.3
(S) 120.95 379.1

NOTE: RNAV 1.
NOTE: RADAR required.
NOTE: STOKD, SCTRR and MCKEY transitions:
DME/DME/IRU or GPS required.
NOTE: DINTY and FICKY transitions: GPS required.
NOTE: Turbopjet aircraft only.

TAKEOFF MINIMUMS
Rwys 24L/R, 25L/R: NA-ATC.
Rwys 6L/R, 7L/R: Standard with a minimum
climb of 500' per NM to 640.



NOTE: Chart not to scale.

(CONTINUED ON FOLLOWING PAGE)

SW-3, 19 FEB 2026 to 19 MAR 2026

TRTON TWO DEPARTURE (RNAV)

LOS ANGELES, CALIFORNIA
LOS ANGELES INTL (LAX)