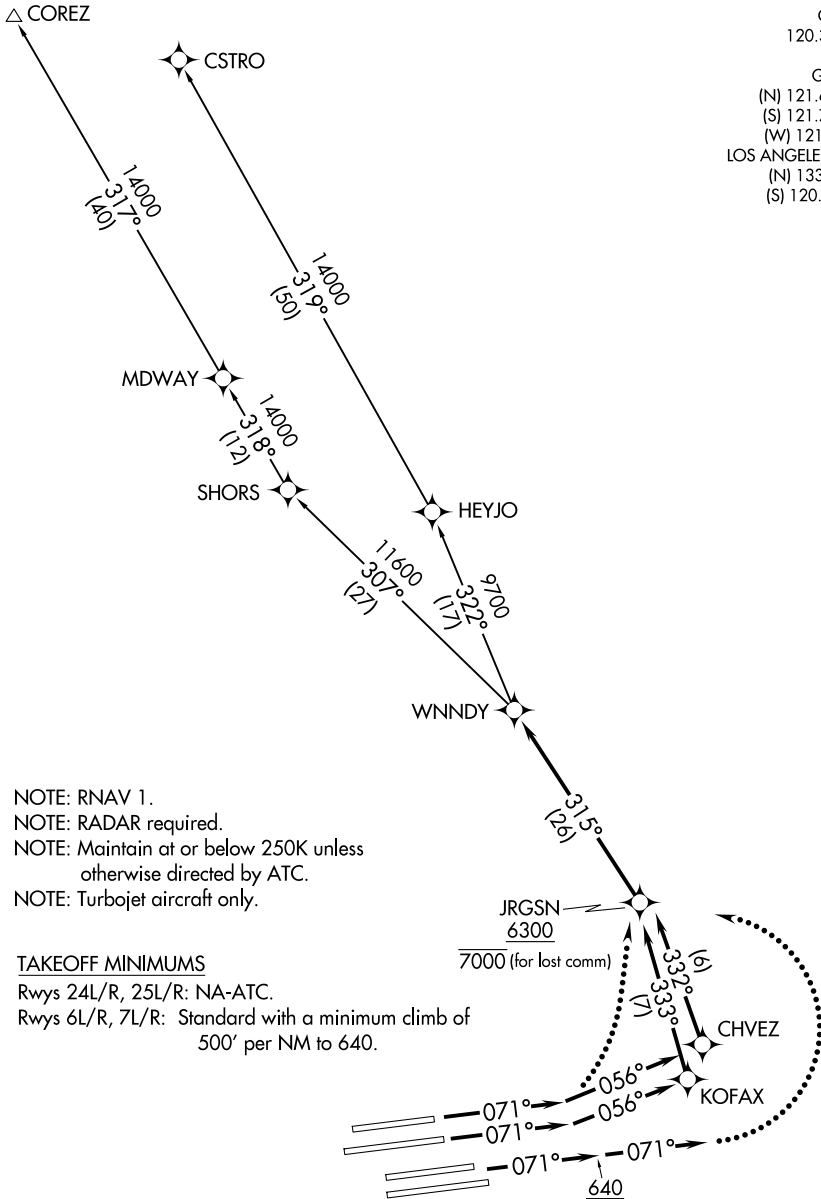


**TOP ALTITUDE:  
FL230**

SOCAL DEP CON	125.2 323.275
D-ATIS DEP	135.65
CLNC DEL	120.35 327.0
CPDLC	
GND CON	
(N) 121.65	327.0
(S) 121.75	327.0
(W) 121.4	327.0
LOS ANGELES TOWER	
(N) 133.9	239.3
(S) 120.95	379.1



NOTE: RNAV 1.  
 NOTE: RADAR required.  
 NOTE: Maintain at or below 250K unless otherwise directed by ATC.  
 NOTE: Turbojet aircraft only.

TAKEOFF MINIMUMS

Rwys 24L/R, 25L/R: NA-ATC.  
 Rwys 6L/R, 7L/R: Standard with a minimum climb of 500' per NM to 640.

(CONTINUED ON FOLLOWING PAGE)

NOTE: Chart not to scale.