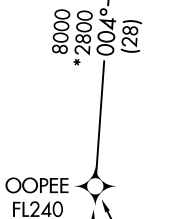
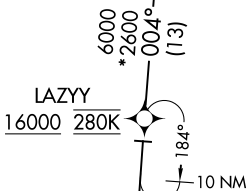
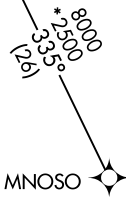
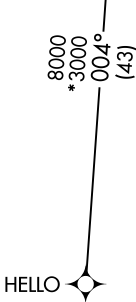


BLUEM FOUR ARRIVAL (RNAV) Transition Routes AL-264 (FAA) MINNEAPOLIS, MINNESOTA

MINNEAPOLIS APP CON
135.475 335.5
D-ATIS ARR
135.35 239.275



NOTE: RADAR required.
NOTE: RNAV 1.
NOTE: DME/DME/IRU or GPS required.
NOTE: For turbojet aircraft only.
NOTE: Expect "descend via" clearance and runway transition assignment by Center. Approach will assign landing runway.
NOTE: Turbojet aircraft descend via Mach number until intercepting 280K. Maintain 280K until slowed by the STAR, or assigned by ATC.
NOTE: HELLO transition ATC assigned only.



NOTE: Chart note to scale.

(CONTINUED ON FOLLOWING PAGE)

- HELLO TRANSITION (HELLO.BLUEM4)
- KICKR TRANSITION (KICKR.BLUEM4)
- LAZYY TRANSITION (LAZYY.BLUEM4)
- MNOSO TRANSITION (MNOSO.BLUEM4)
- OOPEE TRANSITION (OOPEE.BLUEM4)

NC-1, 19 FEB 2026 to 19 MAR 2026

NC-1, 19 FEB 2026 to 19 MAR 2026