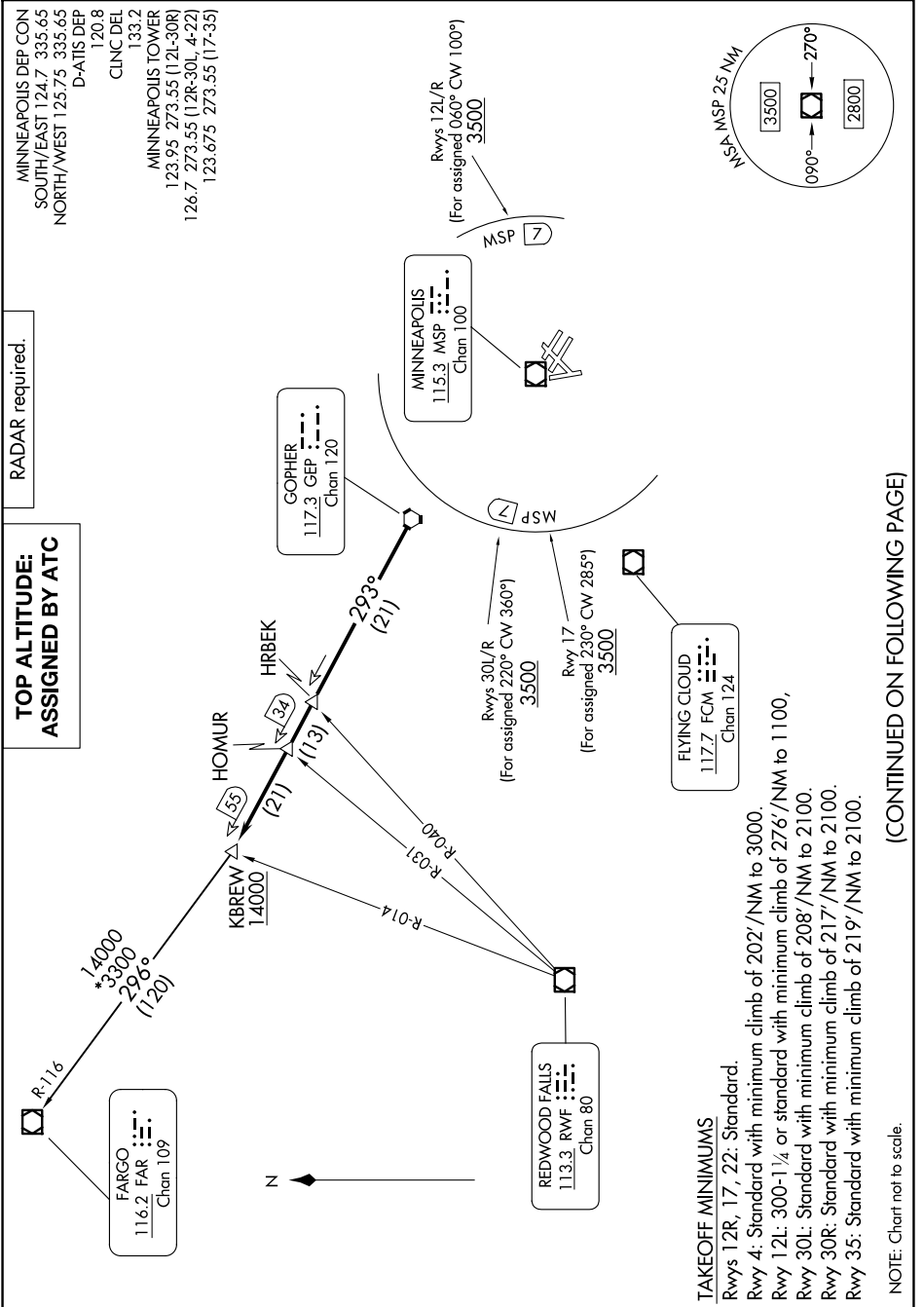


(KBREW2.KBREW) 24137
KBREW TWO DEPARTURE

MINNEAPOLIS-ST PAUL INTL/WOLD-CHAMBERLAIN (MSP)
 AL-264 (FAA) MINNEAPOLIS, MINNESOTA

NC-1, 19 FEB 2026 to 19 MAR 2026



(KBREW2.KBREW) 16MAY24
KBREW TWO DEPARTURE

MINNEAPOLIS, MINNESOTA
 MINNEAPOLIS-ST PAUL INTL/WOLD-CHAMBERLAIN (MSP)

NC-1, 19 FEB 2026 to 19 MAR 2026

TAKEOFF MINIMUMS
 Rwy 12R, 17, 22: Standard.
 Rwy 4: Standard with minimum climb of 202'/NM to 3000.
 Rwy 12L: 300-1/4 or standard with minimum climb of 276'/NM to 1100,
 Rwy 30L: Standard with minimum climb of 208'/NM to 2100.
 Rwy 30R: Standard with minimum climb of 217'/NM to 2100.
 Rwy 35: Standard with minimum climb of 219'/NM to 2100.

NOTE: Chart not to scale.

(CONTINUED ON FOLLOWING PAGE)