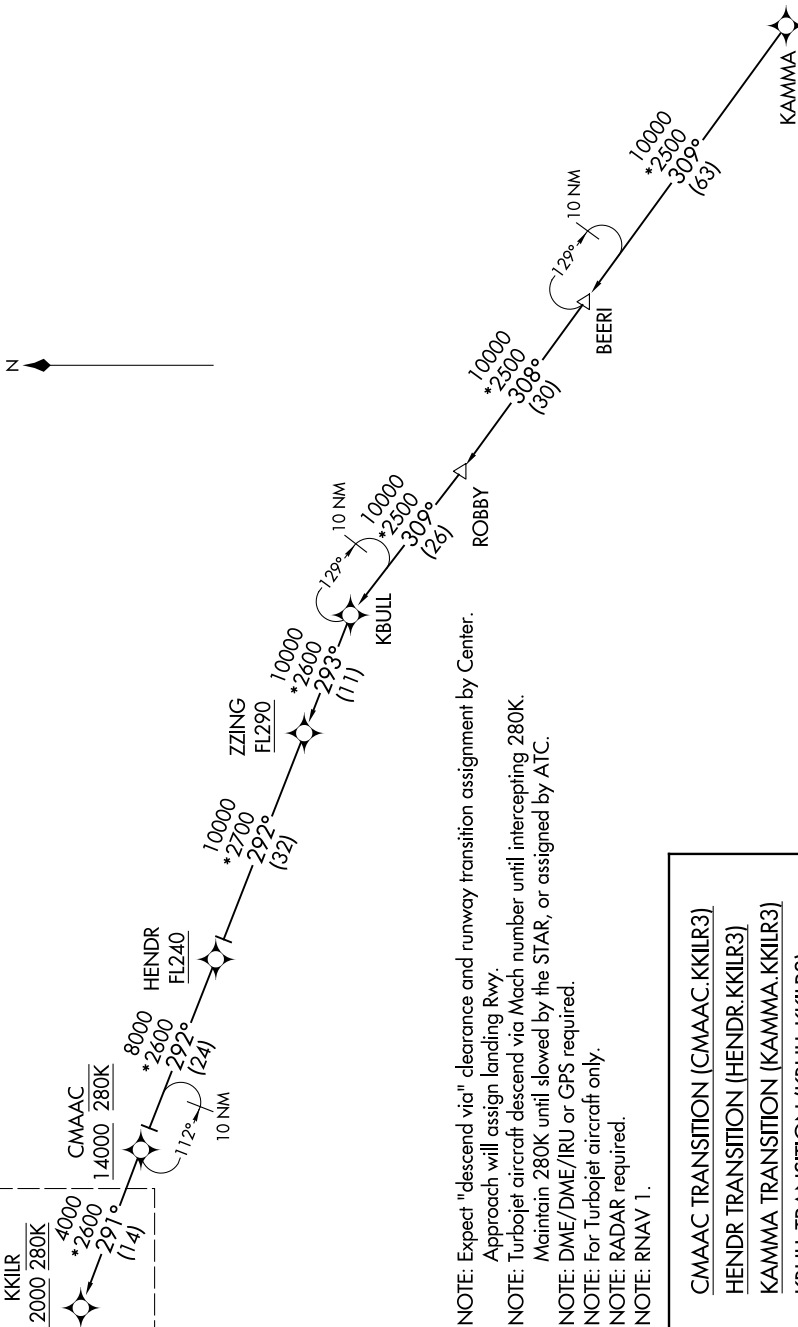


MINNEAPOLIS APP CON
126.35 335.5
D-ATIS ARR
135.35 239.275



NOTE: Expect "descend via" clearance and runway transition assignment by Center.
 Approach will assign landing Rwy.
 NOTE: Turbojet aircraft descend via Mach number until intercepting 280K.
 Maintain 280K until slowed by the STAR, or assigned by ATC.
 NOTE: DME/DME/IRU or GPS required.
 NOTE: For Turbojet aircraft only.
 NOTE: RADAR required.
 NOTE: RNAV 1.

- CMAAC TRANSITION (CMAAC.KKILR3)
- HENDR TRANSITION (HENDR.KKILR3)
- KAMMA TRANSITION (KAMMA.KKILR3)
- KBULL TRANSITION (KBULL.KKILR3)

NOTE: Chart not to scale.

(CONTINUED ON FOLLOWING PAGE)

NC-1, 19 FEB 2026 to 19 MAR 2026

NC-1, 19 FEB 2026 to 19 MAR 2026