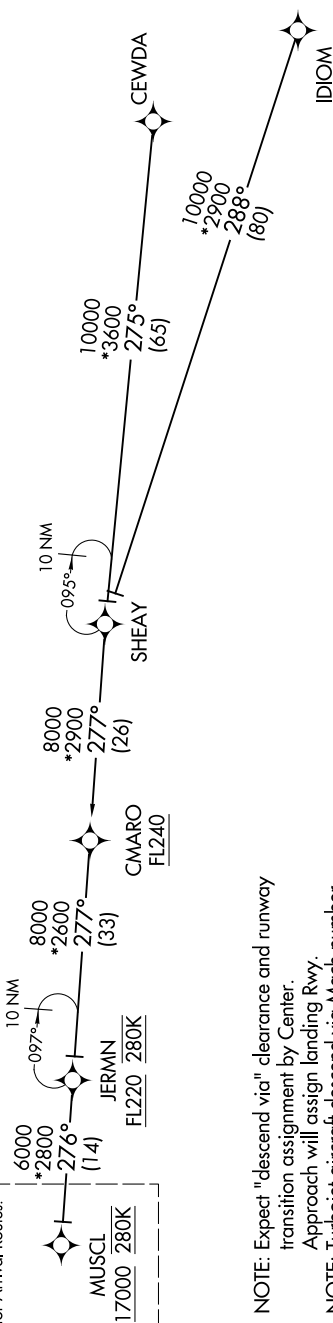


MUSCL THREE ARRIVAL (RNAV) Transition Routes AL-264 (FAA) MINNEAPOLIS, MINNESOTA

MINNEAPOLIS APP CON
126.35 335.5
D-ATIS ARR
135.35 239.275

See following page
for Arrival Routes.



- NOTE: Expect "descend via" clearance and runway transition assignment by Center.
- NOTE: Approach will assign landing Rwy.
- NOTE: Turbojet aircraft descend via Mach number until intercepting 280K. Maintain 280K until slowed by the STAR, or assigned by ATC.
- NOTE: DME/DME/IRU or GPS required.
- NOTE: For turbojet aircraft only.
- NOTE: RADAR required.
- NOTE: RNAV 1.

CEWDA TRANSITION (CEWDA.MUSCL3)
CMARO TRANSITION (CMARO.MUSCL3)
IDIOM TRANSITION (IDIOM.MUSCL3)
JERMIN TRANSITION (JERMIN.MUSCL3)
SHEAY TRANSITION (SHEAY.MUSCL3)

(CONTINUED ON FOLLOWING PAGE)

NOTE: Chart not to scale.