

(ORSKY3.ORSKY) 23334  
**ORSKY THREE DEPARTURE**

MINNEAPOLIS-ST PAUL INTL/WOLD-CHAMBERLAIN (MSP)  
 AL-264 (FAA) MINNEAPOLIS, MINNESOTA

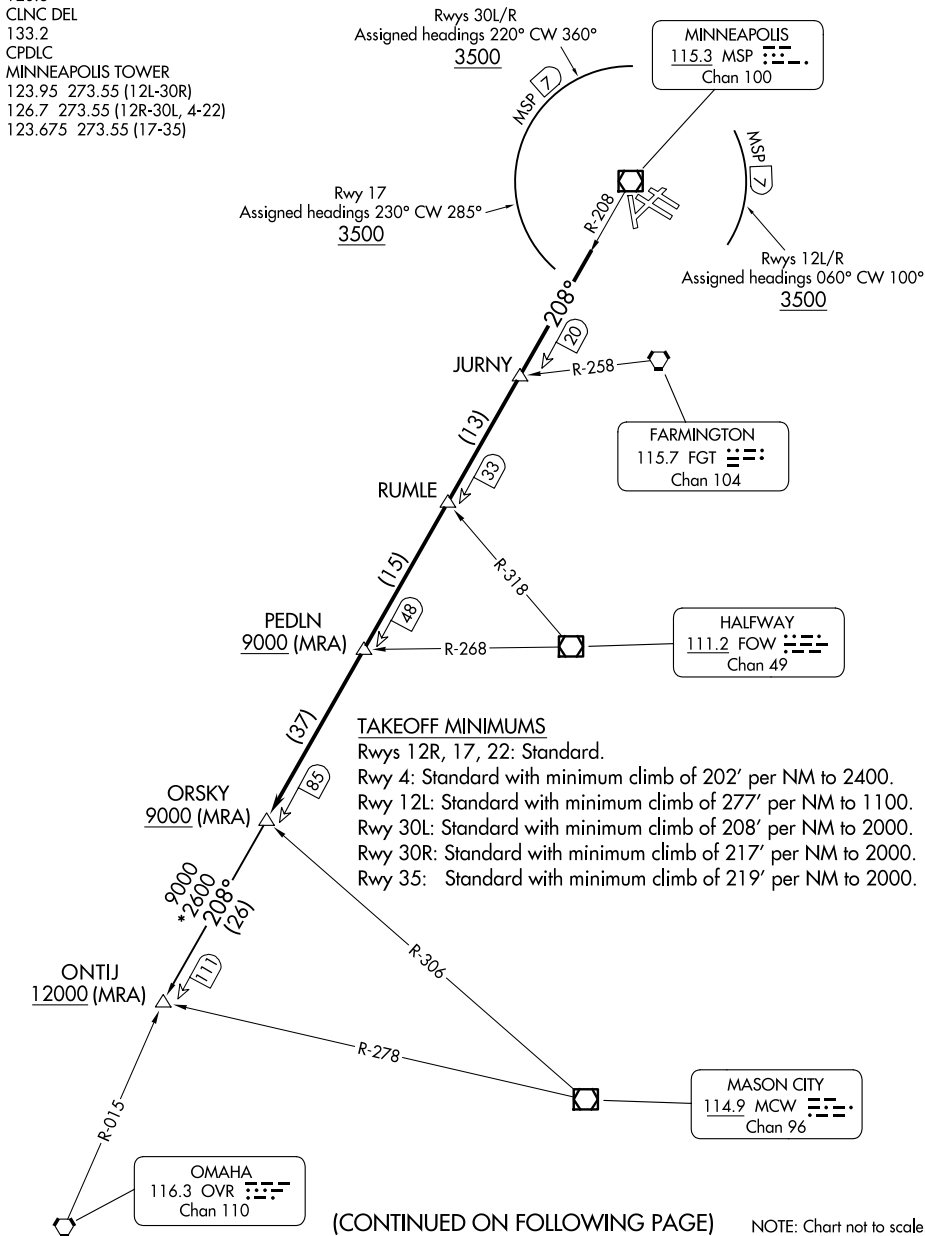
MINNEAPOLIS DEP CON  
 SOUTH/EAST 124.7 284.7  
 NORTH/WEST 125.75 284.7  
 D-ATIS DEP  
 120.8  
 CLNC DEL  
 133.2  
 CPDLC  
 MINNEAPOLIS TOWER  
 123.95 273.55 (12L-30R)  
 126.7 273.55 (12R-30L, 4-22)  
 123.675 273.55 (17-35)

RADAR required.

**TOP ALTITUDE:  
 ASSIGNED BY ATC**

NC-1, 19 FEB 2026 to 19 MAR 2026

NC-1, 19 FEB 2026 to 19 MAR 2026



**TAKEOFF MINIMUMS**

Rwys 12R, 17, 22: Standard.  
 Rwy 4: Standard with minimum climb of 202' per NM to 2400.  
 Rwy 12L: Standard with minimum climb of 277' per NM to 1100.  
 Rwy 30L: Standard with minimum climb of 208' per NM to 2000.  
 Rwy 30R: Standard with minimum climb of 217' per NM to 2000.  
 Rwy 35: Standard with minimum climb of 219' per NM to 2000.

(CONTINUED ON FOLLOWING PAGE)

NOTE: Chart not to scale.

(ORSKY3.ORSKY) 08SEP22  
**ORSKY THREE DEPARTURE**

MINNEAPOLIS, MINNESOTA  
 MINNEAPOLIS-ST PAUL INTL/WOLD-CHAMBERLAIN (MSP)