

BALDY THREE DEPARTURE

AL-322 (FAA)

PHOENIX SKY HARBOR INTL (PHX)

PHOENIX, ARIZONA

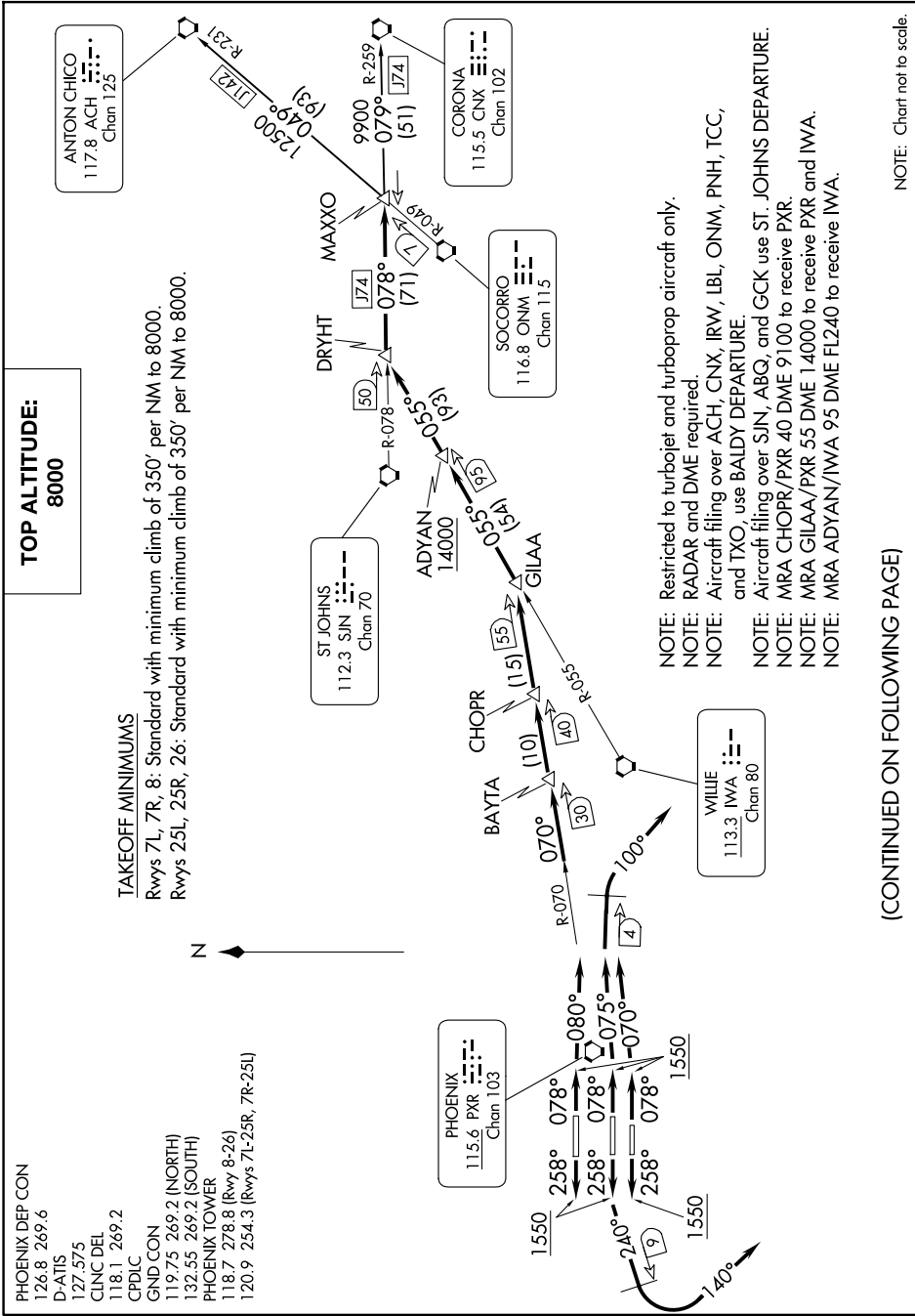
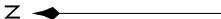
SW-4, 19 FEB 2026 to 19 MAR 2026

- PHOENIX DEP CON
 126.8 269.6
 D-ATIS
 127.575
 CLNC DEL
 118.1 269.2
 CPDLC
 GND CON
 119.75 269.2 (NORTH)
 132.55 269.2 (SOUTH)
 PHOENIX TOWER
 118.7 278.8 (Rwy 8-26)
 120.9 254.3 (Rwys 7L-25R, 7R-25L)

**TOP ALTITUDE:
8000**

TAKEOFF MINIMUMS

Rwys 7L, 7R, 8: Standard with minimum climb of 350' per NM to 8000.
Rwys 25L, 25R, 26: Standard with minimum climb of 350' per NM to 8000.



(CONTINUED ON FOLLOWING PAGE)

NOTE: Chart not to scale.

SW-4, 19 FEB 2026 to 19 MAR 2026

BALDY THREE DEPARTURE