

MRBIL ONE DEPARTURE (RNAV)

AL-322 (FAA)

PHOENIX SKY HARBOR INTL (PHX)
PHOENIX, ARIZONA

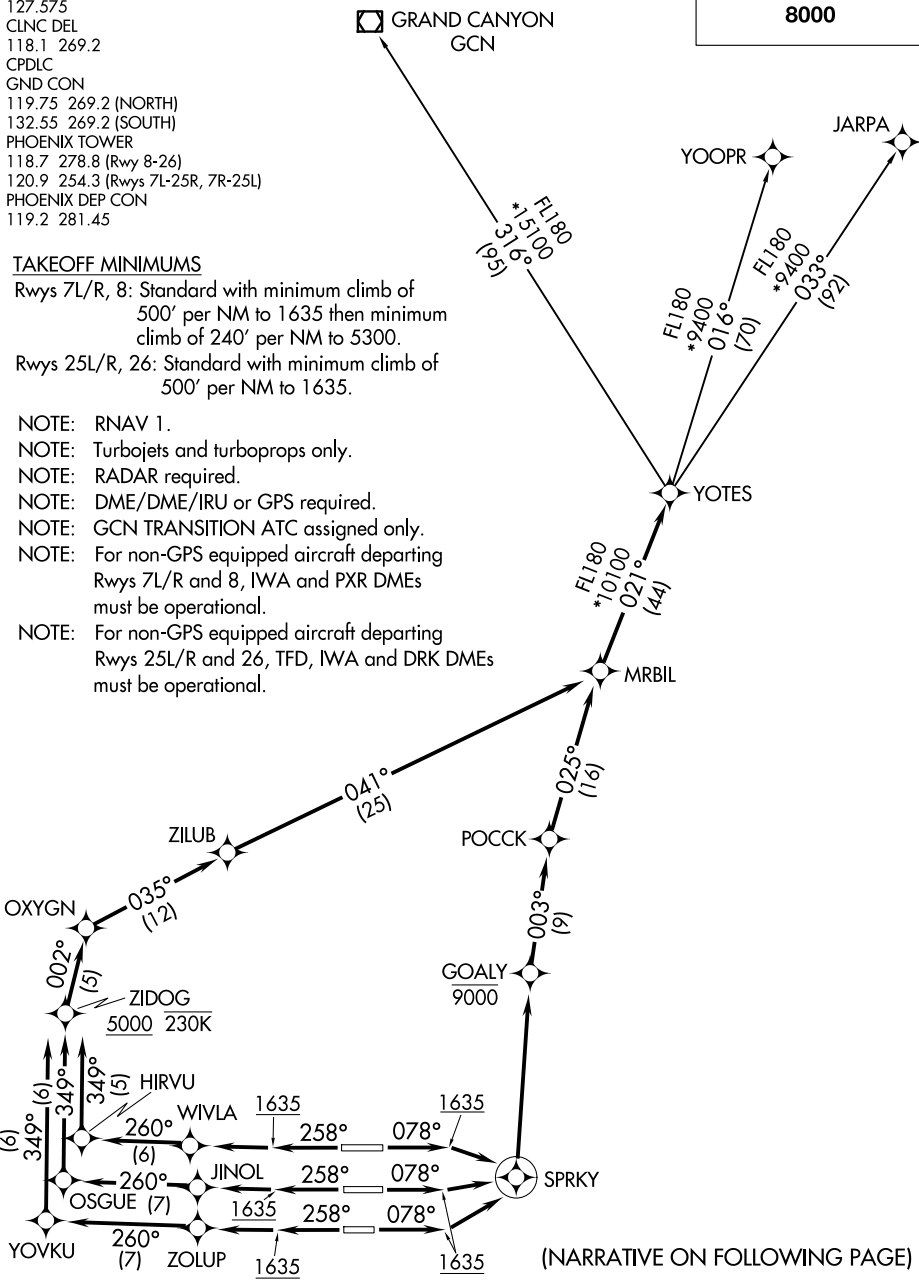
D-ATIS
127.575
CLNC DEL
118.1 269.2
CPDLC
GND CON
119.75 269.2 (NORTH)
132.55 269.2 (SOUTH)
PHOENIX TOWER
118.7 278.8 (Rwy 8-26)
120.9 254.3 (Rwys 7L-25R, 7R-25L)
PHOENIX DEP CON
119.2 281.45

TAKEOFF MINIMUMS

Rwys 7L/R, 8: Standard with minimum climb of 500' per NM to 1635 then minimum climb of 240' per NM to 5300.
Rwys 25L/R, 26: Standard with minimum climb of 500' per NM to 1635.

- NOTE: RNAV 1.
NOTE: Turbojets and turboprops only.
NOTE: RADAR required.
NOTE: DME/DME/IRU or GPS required.
NOTE: GCN TRANSITION ATC assigned only.
NOTE: For non-GPS equipped aircraft departing Rwys 7L/R and 8, IWA and PXR DMEs must be operational.
NOTE: For non-GPS equipped aircraft departing Rwys 25L/R and 26, TFD, IWA and DRK DMEs must be operational.

**TOP ALTITUDE:
8000**



(NARRATIVE ON FOLLOWING PAGE)

NOTE: Chart not to scale.

SW-4, 19 FEB 2026 to 19 MAR 2026

SW-4, 19 FEB 2026 to 19 MAR 2026

MRBIL ONE DEPARTURE (RNAV)

(MRBIL1.MRBIL) 24MAY18

PHOENIX, ARIZONA
PHOENIX SKY HARBOR INTL (PHX)