

# QUAKY ONE DEPARTURE (RNAV)

AL-322 (FAA)

PHOENIX SKY HARBOR INTL (PHX)  
PHOENIX, ARIZONA

D-ATIS  
127.575  
CLNC DEL  
118.1 269.2  
CPDLC  
GND CON  
119.75 269.2 (NORTH)  
132.55 269.2 (SOUTH)  
PHOENIX TOWER  
118.7 278.8 (Rwy 8-26)  
120.9 254.3 (Rwys 7L-25R, 7R-25L)  
PHOENIX DEP CON  
119.2 281.45

GRAND CANYON   
GCN

**TOP ALTITUDE:  
8000**

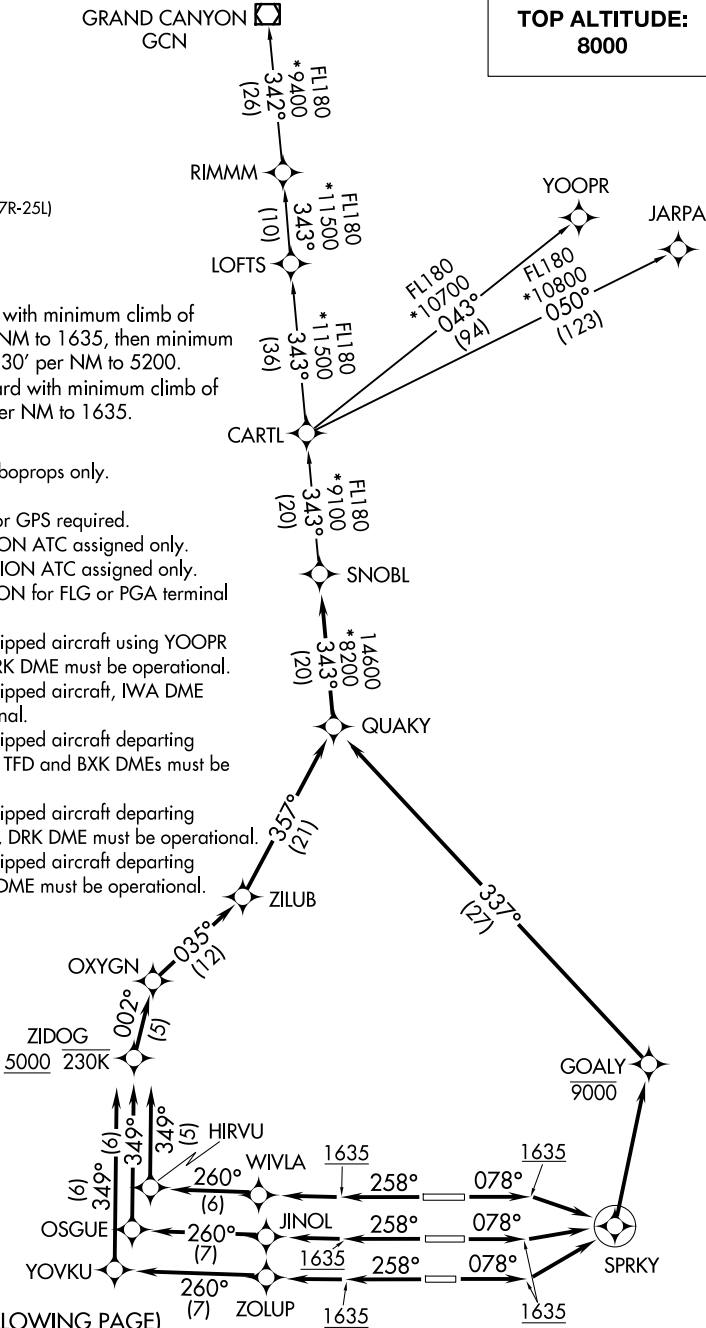
### TAKEOFF MINIMUMS

Rwys 7L/R, 8: Standard with minimum climb of 500' per NM to 1635, then minimum climb of 230' per NM to 5200.  
Rwys 25L/R, 26: Standard with minimum climb of 500' per NM to 1635.

- NOTE: RNAV 1.
- NOTE: Turbojets and turboprops only.
- NOTE: RADAR required.
- NOTE: DME/DME/IRU or GPS required.
- NOTE: JARPA TRANSITION ATC assigned only.
- NOTE: YOOPR TRANSITION ATC assigned only.
- NOTE: CARTL TRANSITION for FLG or PGA terminal arrivals only.
- NOTE: For non-GPS equipped aircraft using YOOPR TRANSITION, DRK DME must be operational.
- NOTE: For non-GPS equipped aircraft, IWA DME must be operational.
- NOTE: For non-GPS equipped aircraft departing Rwys 25L/R, 26, TFD and BXK DMEs must be operational.
- NOTE: For non-GPS equipped aircraft departing Rwys 8, 25R, 26, DRK DME must be operational.
- NOTE: For non-GPS equipped aircraft departing Rwys 7L/R, PXR DME must be operational.

SW-4, 19 FEB 2026 to 19 MAR 2026

SW-4, 19 FEB 2026 to 19 MAR 2026



NOTE: Chart not to scale.

(NARRATIVE ON FOLLOWING PAGE)

# QUAKY ONE DEPARTURE (RNAV)

PHOENIX, ARIZONA  
PHOENIX SKY HARBOR INTL (PHX)