

CRVZA TWO ARRIVAL (RNAV) Transition Routes

SAN ANTONIO, TEXAS

SC-3, 19 FEB 2026 to 19 MAR 2026

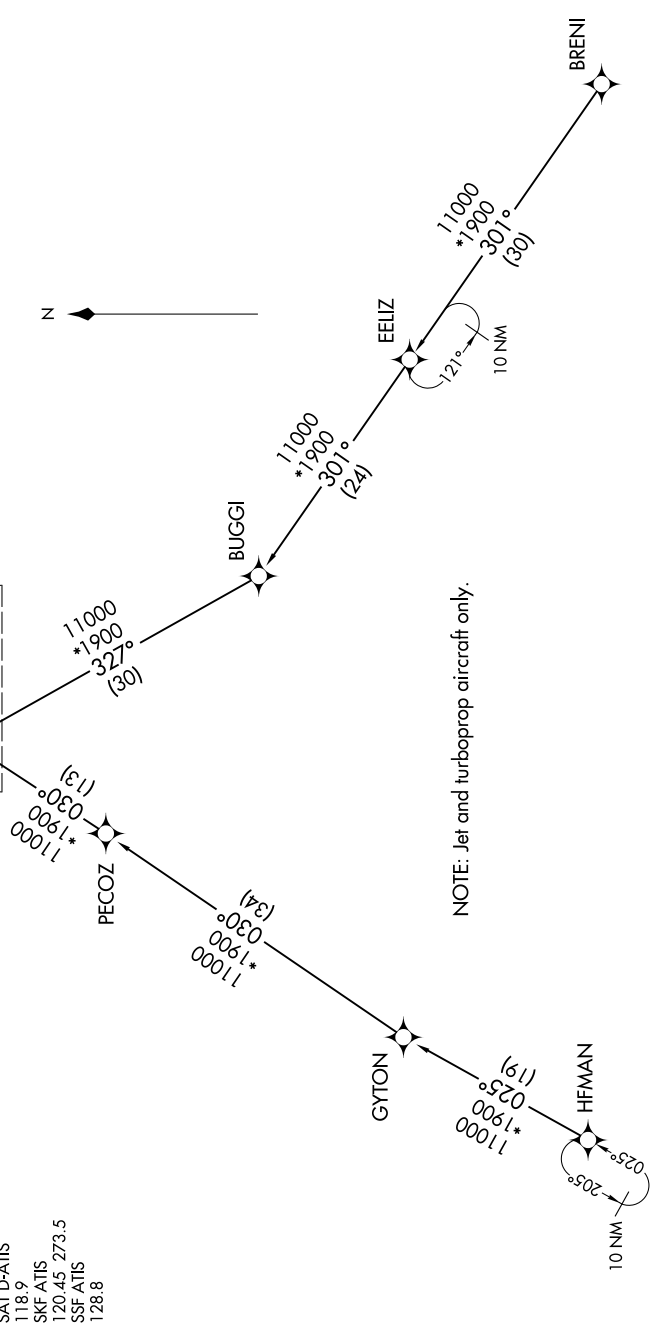
SAN ANTONIO APP CON

- 125.7 290.225
- BAZ ATIS
- 119.325
- KRND ATIS *
- 290.525
- SAT D-ATIS
- 118.9
- SKF ATIS
- 120.45 273.5
- SSF ATIS
- 128.8

See following page for arrival routes.

CRVZA	
17000	250K
11000	

RNAV 1 - DME/DME/IRU or GPS.
RADAR required.



NOTE: Jet and turboprop aircraft only.

BRENI TRANSITION (BRENI.CRVZA2)
 EELIZ TRANSITION (EELIZ.CRVZA2)
 HFMAN TRANSITION (HFMAN.CRVZA2)

(CONTINUED ON FOLLOWING PAGE)

NOTE: Chart not to scale.

SC-3, 19 FEB 2026 to 19 MAR 2026

CRVZA TWO ARRIVAL (RNAV) Transition Routes

SAN ANTONIO, TEXAS