

# ALAMO FIVE DEPARTURE

RADAR required.

**TOP ALTITUDE:  
ASSIGNED BY ATC**

SAN ANTONIO DEP CON  
125.7 290.225  
ATIS  
128.8  
CLNC DEL (When twr closed)  
121.7  
GND CON  
121.7 379.9  
STINSON TOWER ★  
118.2 (CTAF) 379.9

BROWNWOOD  
113.55 BWD  
Chan 82(Y)

COWBOY  
116.2 CVE  
Chan 109

GOOCH SPRINGS  
112.5 AGJ  
Chan 72

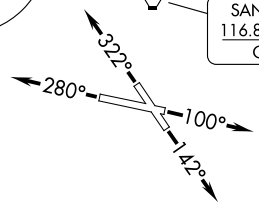
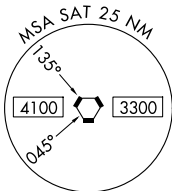
CENTEX  
112.8 CWK  
Chan 75

STONEWALL  
113.8 STV  
Chan 85

NOTE: GOBBY Transition: Right turn at GOBBY NA for aircraft required FL240 and above.  
NOTE: HENLY Transition: Right turn at HENLY NA for aircraft required FL240 and above.

### TAKEOFF MINIMUMS

- Rwy 10: Standard with minimum climb of 230'/NM to 1900.
- Rwy 14: Standard with minimum climb of 220'/NM to 1900.
- Rwy 28: 300-1½ or standard with minimum climb of 230'/NM to 900, or alternatively, with standard takeoff minimums and a normal 200'/NM climb gradient, takeoff must occur no later than 1800' prior to DER.
- Rwy 32: Standard with minimum climb of 230'/NM to 1700.



SAN ANTONIO  
116.8 SAT  
Chan 115

NOTE: Chart not to scale.

(CONTINUED ON FOLLOWING PAGE)