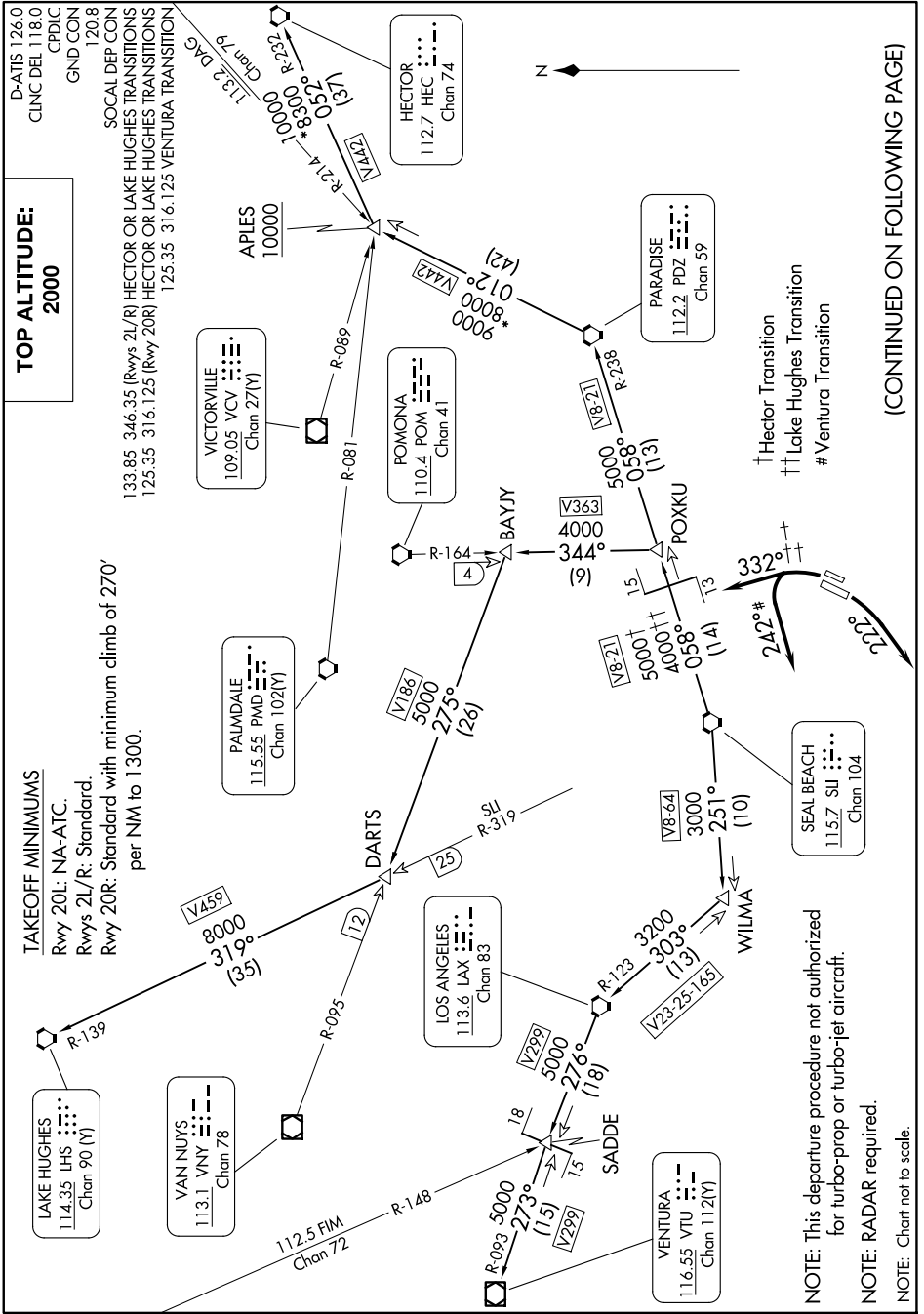


ANAHEIM ONE DEPARTURE

AL-377 (FAA)

JOHN WAYNE/ORANGE COUNTY (SNA)
SANTA ANA, CALIFORNIA

SW-3, 19 FEB 2026 to 19 MAR 2026



(CONTINUED ON FOLLOWING PAGE)

SW-3, 19 FEB 2026 to 19 MAR 2026

ANAHEIM ONE DEPARTURE

SANTA ANA, CALIFORNIA
JOHN WAYNE/ORANGE COUNTY (SNA)