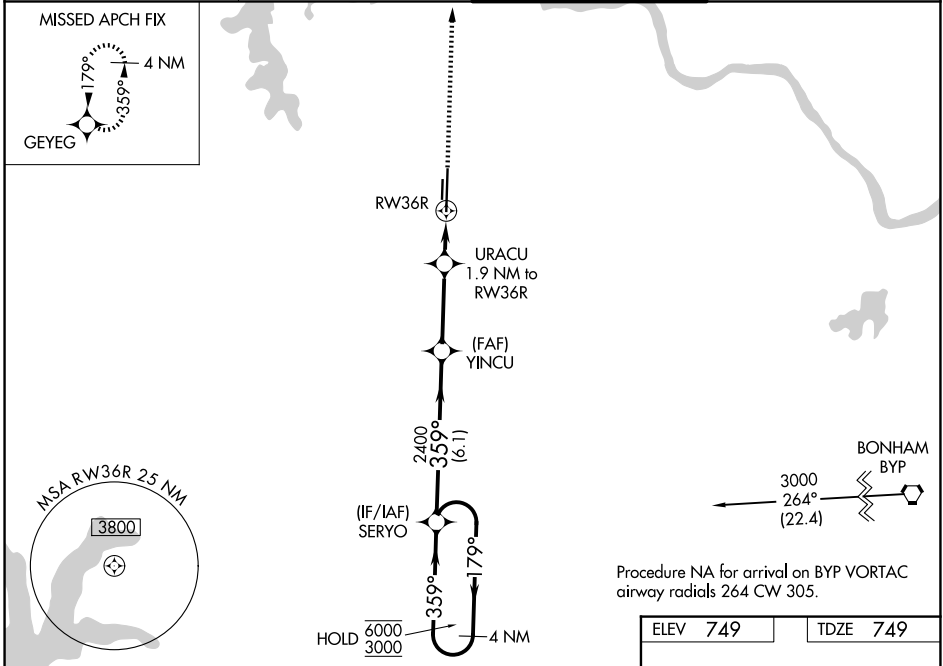


WAAS CH 65928 W36A	APP CRS 359°	Rwy Ldg TDZE 749 Apt Elev 749
--	------------------------	---

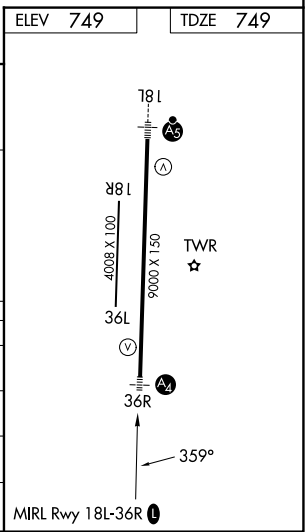
RNAV (GPS) RWY 36R

NORTH TEXAS RGNL/PERRIN FLD (GYI)

RNP APCH - GPS.			MALS	MISSED APPROACH: Climb to 3000 direct GEYEG and hold.
⚠ Circling Rwy 18R, 36L NA at night. ⚠ Inop table does not apply to LPV. For uncompensated Baro-VNAV systems, LNAV/VNAV NA below -10°C or above 54°C.				
ATIS 118.775	FORT WORTH CENTER 124.75 323.0	NORTH TEXAS TOWER ★ 120.575 (CTAF) 0 233.7	GND CON 124.125	



4 NM Holding Pattern		SERYO	3000	GEYEG
6000 ← 179° 3000 → 359°		2400 YINCUB	1400 URACU 1.9 NM to RWY36R	1.3 NM to RWY36R RWY36R
GP 3.00° TCH 51		6.1 NM	3.1 NM	0.6 NM
CATEGORY	A	B	C	D
LPV DA	949-3/4		200 (200-3/4)	
LNAV/VNAV DA	1220-13/8		471 (500-13/8)	
LNAV MDA	1220-3/4	471 (500-3/4)	1220-11/8	471 (500-11/8)
CIRCLING	1300-1	551 (600-1)	1400-13/4 651 (700-13/4)	1540-21/2 791 (800-21/2)



SC-2, 19 FEB 2026 to 19 MAR 2026

SC-2, 19 FEB 2026 to 19 MAR 2026