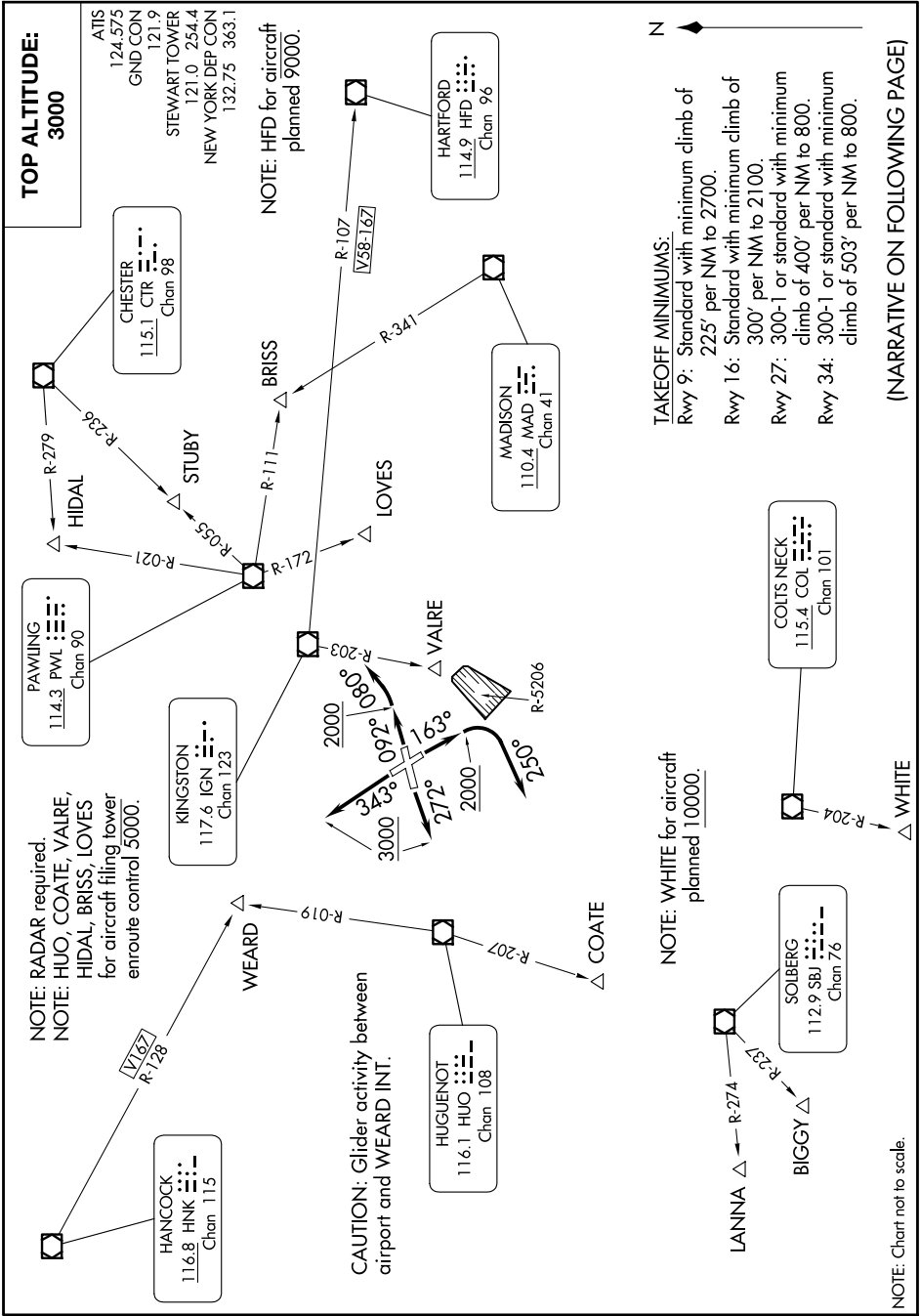


STEWART NINE DEPARTURE

AL-450 (FAA)

NEW YORK STEWART INTL (SWF)
NEW YORK, NEW YORK

NE-2, 19 FEB 2026 to 19 MAR 2026



TOP ALTITUDE:
3000

ATIS
124.575
GND CON
121.9
STEWART TOWER
121.0 254.4
NEW YORK DEP CON
132.75 363.1

NOTE: HFD for aircraft
planned 9000.

TAKEOFF MINIMUMS:

- Rwy 9: Standard with minimum climb of 225' per NM to 2700.
- Rwy 16: Standard with minimum climb of 300' per NM to 2100.
- Rwy 27: 300-1 or standard with minimum climb of 400' per NM to 800.
- Rwy 34: 300-1 or standard with minimum climb of 503' per NM to 800.

NOTE: WHITE for aircraft
planned 10000.

NOTE: Chart not to scale.

WHITE

(NARRATIVE ON FOLLOWING PAGE)

STEWART NINE DEPARTURE

NE-2, 19 FEB 2026 to 19 MAR 2026