

AUSTIN SEVEN DEPARTURE

AL-556 (FAA)

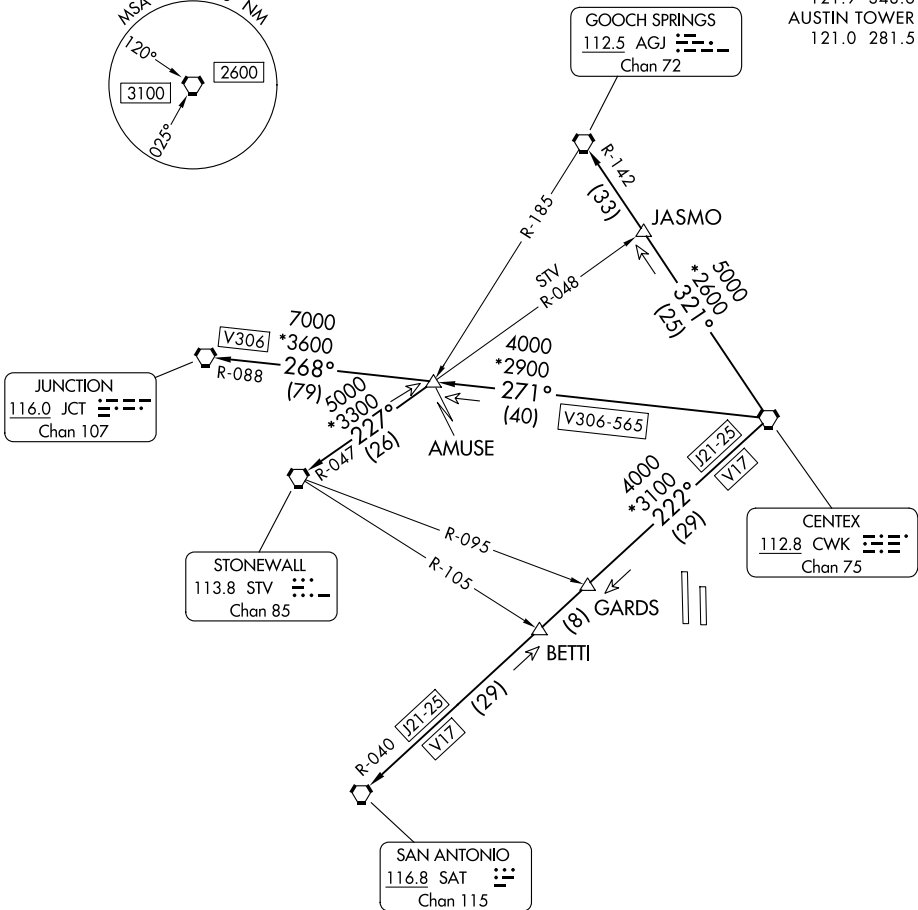
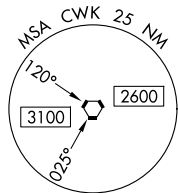
AUSTIN-BERGSTROM INTL (AUS)

AUSTIN, TEXAS

RADAR required.

**TOP ALTITUDE:
ASSIGNED BY ATC**

AUSTIN DEP CON
119.0 370.85
D-ATIS
124.4
CLNC DEL
125.5 263.0
CPDLC
GND CON
121.9 348.6
AUSTIN TOWER
121.0 281.5



TAKEOFF MINIMUMS

Rwys 18L/R: Standard.

Rwys 36L/R: Standard with minimum climb of 240' per NM to 2600.

(CONTINUED ON FOLLOWING PAGE)

NOTE: Chart not to scale.

AUSTIN SEVEN DEPARTURE

AUSTIN, TEXAS

AUSTIN-BERGSTROM INTL (AUS)

SC-3, 19 FEB 2026 to 19 MAR 2026

SC-3, 19 FEB 2026 to 19 MAR 2026