

# MOUNTAIN TWO DEPARTURE

AL-582 (FAA)

SEATTLE-TACOMA INTL (SEA)  
SEATTLE, WASHINGTON

NW-1, 19 FEB 2026 to 19 MAR 2026

SEATTLE DEP CON  
119.2 284.7

RADAR and DME required.

PRINCETON  
113.9 YDC  
Chan 86

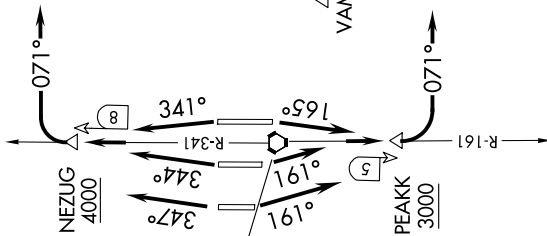
TOP ALTITUDE:  
ASSIGNED BY ATC

ALPSE

PAINE  
110.6 PAE  
Chan 43

### TAKEOFF MINIMUMS

- Rwy 16L: Standard with minimum climb of 560' per NM to 3000.
- Rwy 16C: Standard with minimum climb of 515' per NM to 3000.
- Rwy 16R: Standard with minimum climb of 500' per NM to 3000.
- Rwys 34L/C/R: Standard with minimum climb of 580' per NM to 4000.



SEATTLE  
116.8 SEA  
Chan 115

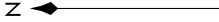
SPOKANE  
115.5 GEG  
Chan 102

EPHRATA  
112.6 EPH  
Chan 73

MULLAN PASS  
117.8 MIP  
Chan 125

MOSES LAKE  
115.0 MWH  
Chan 97

ELLENSBURG  
117.9 ELN  
Chan 126



NOTE: Chart not to scale

(CONTINUED ON FOLLOWING PAGE)

NW-1, 19 FEB 2026 to 19 MAR 2026

# MOUNTAIN TWO DEPARTURE