

FNTSY ONE ARRIVAL (RNAV) Arrival Routes

KEY WEST, FLORIDA

SE-3, 19 FEB 2026 to 19 MAR 2026

NAVY KEY WEST APP CON*
 124.025 313.7
 EYW ATIS
 119.675
 KNQX ATIS *
 307.025

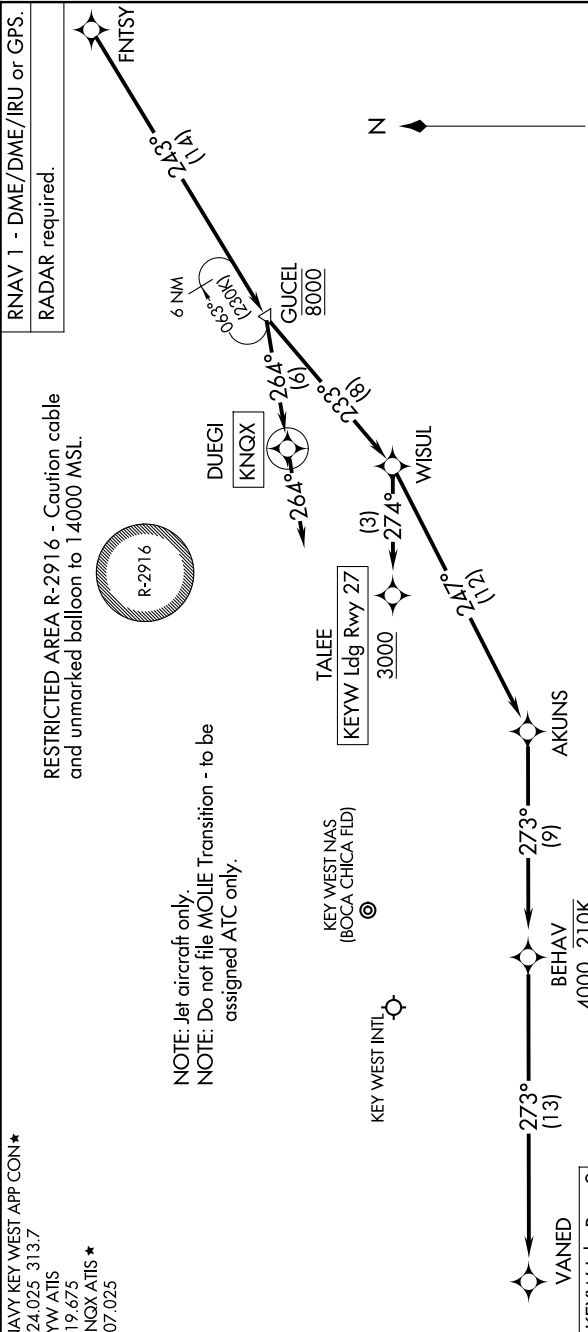
RESTRICTED AREA R-2916 - Caution cable
 and unmarked balloon to 14000 MSL.



NOTE: Jet aircraft only.
 NOTE: Do not file MOLIE Transition - to be
 assigned ATC only.

KEY WEST NAS
 (BOCA CHICA FLD)

KEY WEST INTL



RNAV 1 - DME/DME/IRU or GPS.
 RADAR required.

NOTE: Chart not to scale.

ARRIVAL ROUTE DESCRIPTION

KEYW: From FNTSY on track 243° to cross GUCEL at 8000, then on track 233° to WISUL.
LANDING KEYW RUNWAY 9: From WISUL on track 247° to AKUNS, then on track 273° to cross BEHAV at or above 4000 and at 210K. Expect RNAV (GPS) RWY 9 approach.
LANDING KEYW RUNWAY 27: From WISUL on track 274° to cross TALEE at or above 3000. Expect RNAV (GPS) RWY 27 approach.
LANDING KNQX: From FNTSY on track 243° to cross GUCEL at 8000, then on track 264° to DUEGI, then on track 264°. Expect RADAR vectors to final approach course.

SE-3, 19 FEB 2026 to 19 MAR 2026