

(ENDED2.ENDED) 25219

AL-625 (FAA)

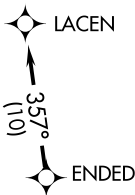
ST PETE-CLEARWATER INTL (PIE)
ST PETERSBURG-CLEARWATER, FLORIDA

ENDED TWO DEPARTURE (RNAV)

TAMPA DEP CON
125.3 316.05
ATIS
134.5
CLNC DEL
120.6 350.2
GND CON
121.9 348.6
ST. PETERSBURG-CLEARWATER TOWER ★
118.3 (CTAF) 257.8

RNAV 1 - DME/DME/IRU or GPS required.
RADAR required.

**TOP ALTITUDE:
1600**

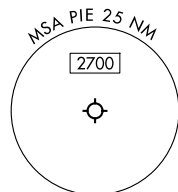
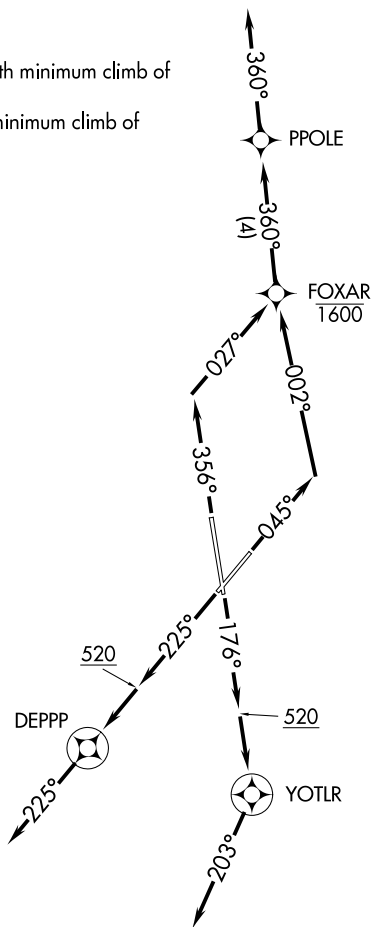


TAKEOFF MINIMUMS

Rwy 18: Standard.

Rwys 4, 36: Standard with minimum climb of 500'/NM to 520.

Rwy 22: Standard with minimum climb of 230'/NM to 300.



NOTE: Jet aircraft only.

NOTE: Chart not to scale.

(CONTINUED ON FOLLOWING PAGE)

ENDED TWO DEPARTURE (RNAV)

(ENDED2.ENDED) 16MAY24

ST PETERSBURG-CLEARWATER, FLORIDA
ST PETE-CLEARWATER INTL (PIE)

SE-3, 19 FEB 2026 to 19 MAR 2026

SE-3, 19 FEB 2026 to 19 MAR 2026