

WAAS CH <b>70627</b> <b>W12A</b>	APP CRS <b>120°</b>	Rwy Idg TDZE Apt Elev	<b>6799</b> <b>680</b> <b>682</b>
--	------------------------	-----------------------------	---

# RNAV (GPS) RWY 12

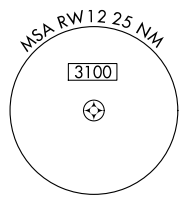
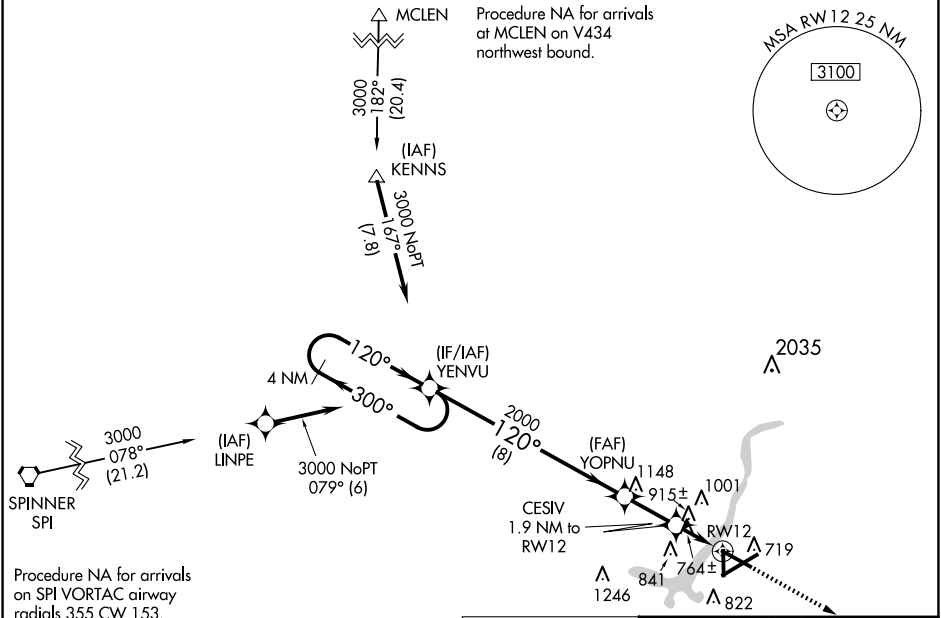
DECATUR (DEC)

RNP APCH - GPS.

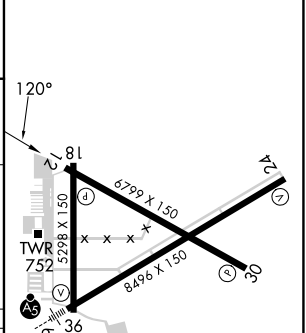
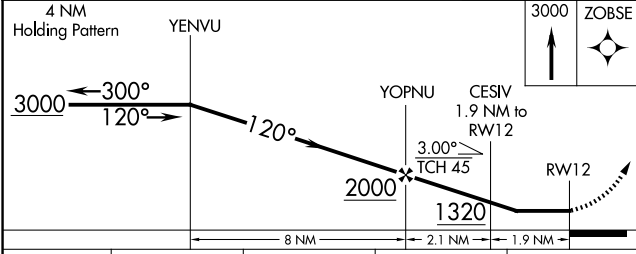
**⚠** Procedure NA at night. Rwy 12 helicopter visibility reduction below 3/4 SM NA. When local altimeter setting not received, use Lincoln altimeter setting and increase all MDA 80 feet, increase LP Cat C and D visibility 1/4 SM, LNAV Cat C and D visibility 3/8 SM, and Circling Cat C and D visibility 1/4 SM.

**MISSED APPROACH:**  
Climb to 3000 direct ZOBSE and hold.

ATIS <b>126.35</b>	CHAMPAIGN APP CON* <b>132.85 290.225</b>	DECATUR TOWER* <b>118.9 (CTAF) 0 291.775</b>	GND CON <b>121.75 291.775</b>	UNICOM <b>122.95</b>
-----------------------	---	---	----------------------------------	-------------------------



ELEV	682	TDZE	680
------	-----	------	-----



CATEGORY	A	B	C	D
LP MDA	1020-1 340 (400-1)			
LNAV MDA	1180-1 500 (500-1)	1180-1 3/8 500 (500-1 3/8)		
CIRCLING	1200-1 518 (600-1)	1240-1 558 (600-1)	1360-2 678 (700-2)	1360-2 1/4 678 (700-2 1/4)

HIRL Rwy 6-24  
MIRL Rwy 12-30 and 18-36

EC-3, 19 FEB 2026 to 19 MAR 2026

EC-3, 19 FEB 2026 to 19 MAR 2026