

(GLADZ4.GLADZ) 25331

AL-744 (FAA)

FORT LAUDERDALE/HOLLYWOOD INTL (FLL)

GLADZ FOUR DEPARTURE (RNAV) Transition Routes

FORT LAUDERDALE, FLORIDA

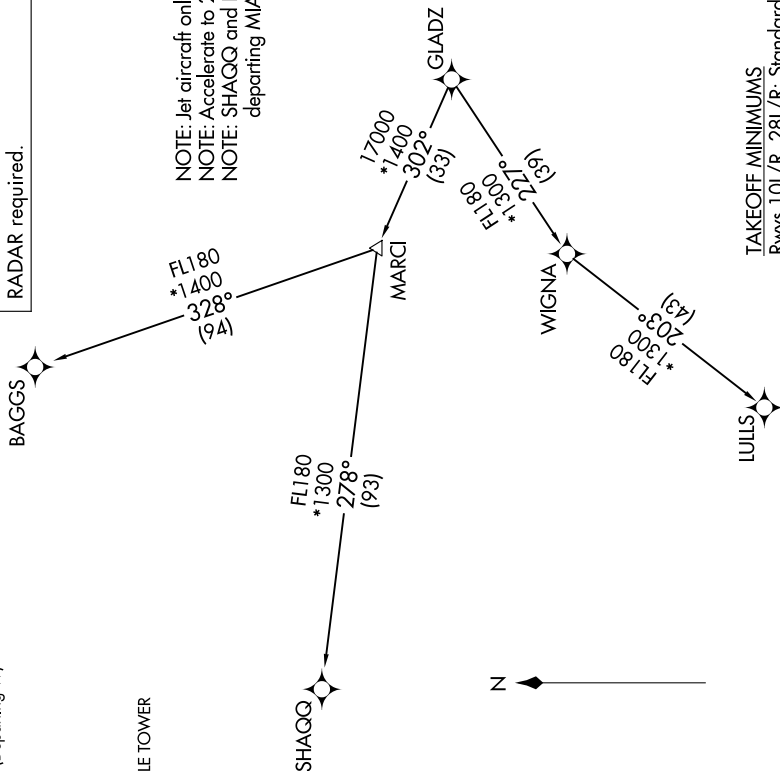
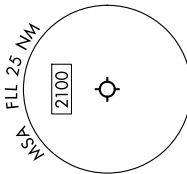
SE-3, 19 FEB 2026 to 19 MAR 2026

**TOP ALTITUDE:
ASSIGNED BY ATC**

RNAV-1 DME/DME/IRU or GPS.
RADAR required for NON-GPS equipped aircraft.
RADAR required.

MIAMI DEP CON
126.05 251.1 (Departing E)
126.85 290.325 (Departing W)
D-ATIS
135.0
CLINC DEL
128.4
CPDLC
GND CON
121.4
FORT LAUDERDALE TOWER
119.3 257.8

NOTE: Jet aircraft only.
NOTE: Accelerate to 250K until leaving 10000, if unable, advise ATC.
NOTE: SHAGQ and BAGGS transitions ATC assigned except aircraft departing MIA.



TAKEOFF MINIMUMS
Rwys 10L/R, 28L/R: Standard with minimum climb of 500'/NM to 580.

(CONTINUED ON FOLLOWING PAGE)

NOTE: Chart not to scale.

SE-3, 19 FEB 2026 to 19 MAR 2026

GLADZ FOUR DEPARTURE (RNAV) Transition Routes

FORT LAUDERDALE, FLORIDA

(GLADZ4.GLADZ) 31OCT24

FORT LAUDERDALE/HOLLYWOOD INTL (FLL)