

HROCK TWO DEPARTURE (RNAV)

SE-3, 19 FEB 2026 to 19 MAR 2026

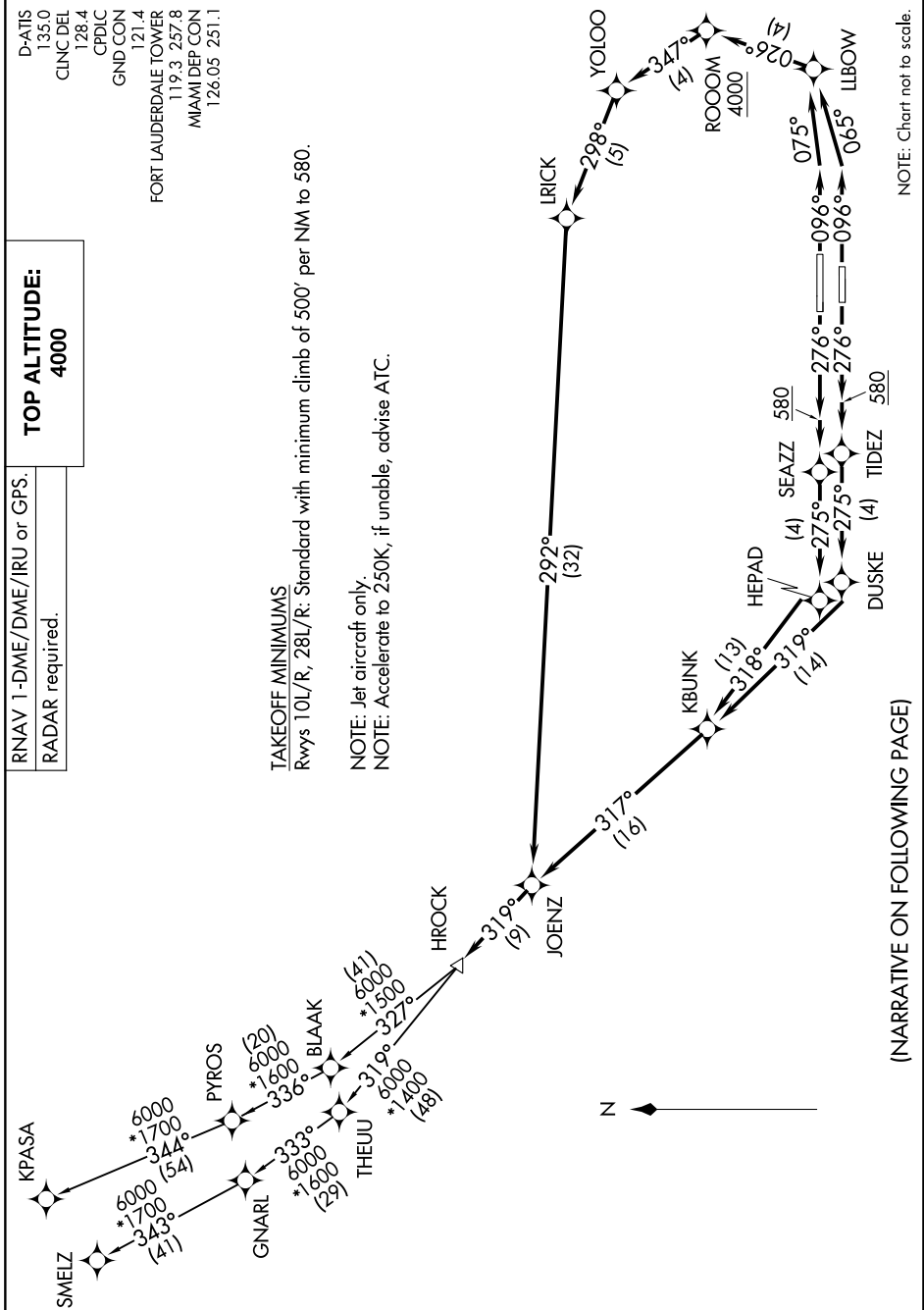
D-ATIS 135.0
 CLNC DEL 128.4
 CPDLC
 GND CON 121.4
 FORT LAUDERDALE TOWER 119.3 257.8
 MIAMI DEP CON 126.05 251.1

TOP ALTITUDE:
4000

RNAV 1-DME/DME/IRU or GPS.
 RADAR required.

TAKEOFF MINIMUMS
 Rwy 10L/R, 28L/R: Standard with minimum climb of 500' per NM to 580.

NOTE: Jet aircraft only.
 NOTE: Accelerate to 250K, if unable, advise ATC.



(NARRATIVE ON FOLLOWING PAGE)

NOTE: Chart not to scale.

SE-3, 19 FEB 2026 to 19 MAR 2026